

7. Clamping systems

7.4 Clamping arbors

7.4.2 Cutter arbors



Cutter arbor with cylindrical shank

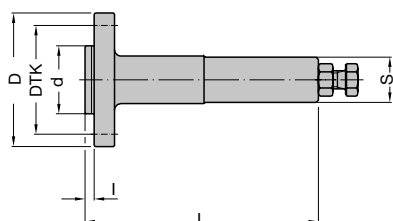
Application:

Arbor for single tools with bore or tool sets with bore.

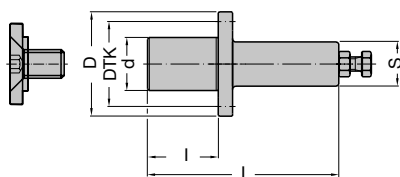
Technical information:

Cylindrical shank design. Short design for grooving cutter and sawblades up to widths NB = 10 mm. Long design for one part or multi part tools/tool sets. Safety device against tool twisting by screw or pin. Cutter arbors are fine balanced. If conical spring washers with safety device against twisting are used, slots are required in the cutter arbor.

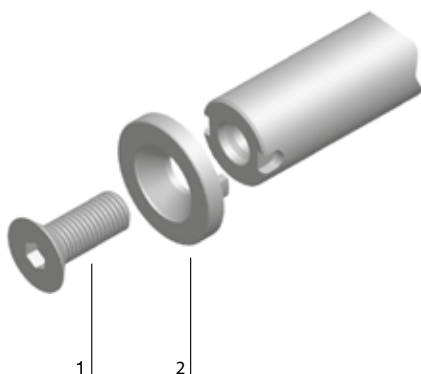
Note: Maximum admissible speed n_{max} depends on the mounted tools. Please comply with the specifications regarding the maximum admissible weight and diameters detailed by the machine manufacturer.



Arbor, short design



Arbor, long design



- 1 Clamping screw
- 2 Conical spring washer for safety against twisting

Short version

TI 501 0 04

D	d	L	l	S	TK	ID
mm	mm	mm	mm	mm		
60	30	85	4	16x50	48	041429 ●
59	30	102	4	20x50	48	041368 ●
59	30	102	4	25x60	48	041367 ●
59	30	127	4	25x60	48	042980 ●

With four countersunk screws M6X16. Maximum diameter for circular saw blades = 250 mm.

Long design

TI 501 0 03

D	d	L	l	S	TK	ID
mm	mm	mm	mm	mm		
50	20	83	25	20x50	32	042982 □
50	20	98	40	20x50	32	042983 □
50	20	113	55	20x50	32	042984 ●
50	20	107	40	25x60	32	041124 ●
50	20	122	55	25x60	32	041125 ●
50	20	137	70	25x60	32	041126 ●
59	30	83	25	20x50	48	042985 □
59	30	98	40	20x50	48	042986 ●
59	30	93	25	25x60	48	041127 □
59	30	108	40	25x60	48	041128 ●

Sales unit consisting of arbor, clamping screw and conical spring washer (flat design), without spacers.

Spare parts:

BEZ	ABM	BEM	ID
	mm		
Washer with safety device against twisting, M10	20/35x13x10.5	for d = 20	006768 ●
Washer with safety device against twisting, M16	30/45x15x16.5	for d = 30	006769 ●

Suitable spacers, see section Knives and Spare Parts.

Архангельск (8182)63-90-72
 Астана (7172)727-132
 Астрахань (8512)99-46-04
 Барнаул (3852)73-04-60
 Белгород (4722)40-23-64
 Брянск (4832)59-03-52
 Владивосток (423)249-28-31
 Волгоград (844)278-03-48
 Вологда (8172)26-41-59
 Воронеж (473)204-51-73
 Екатеринбург (343)384-55-89
 Иваново (4932)77-34-06

Ижевск (3412)26-03-58
 Иркутск (395)279-98-46
 Казань (843)206-01-48
 Калининград (4012)72-03-81
 Калуга (4842)92-23-67
 Кемерово (3842)65-04-62
 Киров (8332)68-02-04
 Краснодар (861)203-40-90
 Красноярск (391)204-63-61
 Курск (4712)77-13-04
 Липецк (4742)52-20-81
 Киргизия (996)312-96-26-47

Магнитогорск (3519)55-03-13
 Москва (495)268-04-70
 Мурманск (8152)59-64-93
 Набережные Челны (8552)20-53-41
 Нижний Новгород (831)429-08-12
 Новокузнецк (3843)20-46-81
 Новосибирск (383)227-86-73
 Омск (3812)21-46-40
 Орел (4862)44-53-42
 Оренбург (3532)37-68-04
 Пенза (8412)22-31-16
 Россия (495)268-04-70

Пермь (342)205-81-47
 Ростов-на-Дону (863)308-18-15
 Рязань (4912)46-61-64
 Самара (846)206-03-16
 Санкт-Петербург (812)309-46-40
 Саратов (845)249-38-78
 Севастополь (8692)22-31-93
 Симферополь (3652)67-13-56
 Смоленск (4812)29-41-54
 Сочи (862)225-72-31
 Ставрополь (8652)20-65-13
 Казахстан (772)734-952-31

Сургут (3462)77-98-35
 Тверь (4822)63-31-35
 Томск (3822)98-41-53
 Тула (4872)74-02-29
 Тюмень (3452)66-21-18
 Ульяновск (8422)24-23-59
 Уфа (347)229-48-12
 Хабаровск (4212)92-98-04
 Челябинск (351)202-03-61
 Череповец (8202)49-02-64
 Ярославль (4852)69-52-93



Cutter arbor with steep taper SK 30 / SK 40

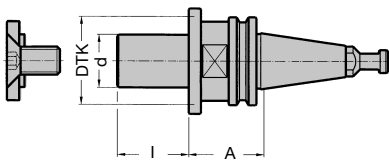
Application:

Arbor for single tools with bore or tool sets with bore.

Technical information:

Steep taper design as per DIN ISO 7388, without grooves and notches. Short design, suitable for low vibration cutting. Safety device against tool twisting by screw or pin. Arbors are fine balanced. If conical spring washers with safety device against twisting are used, slots are required in the arbor. For suitable mounting device VN 799 0, see section Knives and Spare Parts.

Note: Please comply with the specifications regarding the maximum admissible weight and diameters detailed by the machine manufacturer!

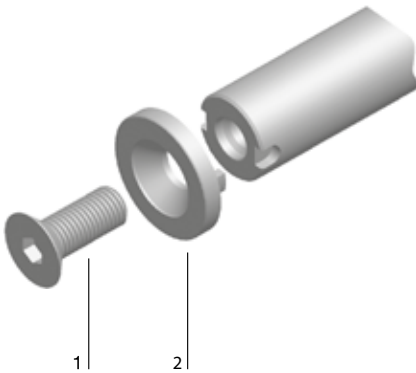


Arbor SK 30/SK 40

SK 30, A = 42 mm

TI 501 0 01

Type	l mm	d mm	TK	Weight kg	ID
A	70	20	32	1	041137 □
A	80	30	48	1.3	042814 □
B	70	20	32	1	041370 □
B	80	30	48	1.3	041373 □
C	70	20	32	1	042832 □
C	80	30	48	1.3	042836 □



- 1 Clamping screw
- 2 Conical spring washer for safety against twisting

SK 40, A = 42 mm

TI 501 0 01

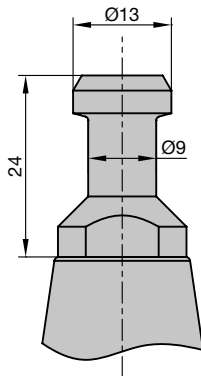
Type	l mm	d mm	TK	Weight kg	ID
E	80	30	48	1.8	042815 □

Sales unit consists of arbor with pull stud, clamping screw and conical spring washer (flat design), without spacers.

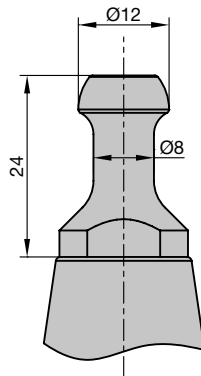
Spare parts:

BEZ	ABM mm	BEM	ID
Washer with safety device against twisting, M10	20/35x13x10.5	for d = 20	006768 ●
Washer with safety device against twisting, M16	30/45x15x16.5	for d = 30	006769 ●
Locking nut with Balluff chip	SK 40, 511 Bytes		081601 ●

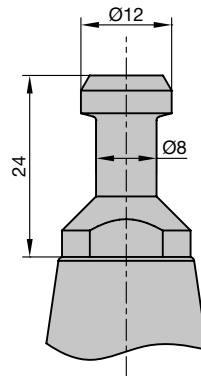
Suitable spacers, see section Knives and Spare Parts.



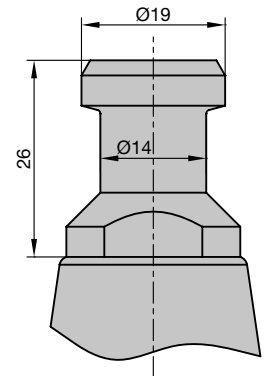
Type: A
SK 30 pull stud as per DIN ISO 7388



Type: B
SK 30/ISO 30 pull stud for HSD spindles from construction year 9/92 on



Type: C
SK 30/ISO 30 pull stud Biesse until construction year 9/92



Type: E
SK 40 pull stud as per DIN ISO 7388



Cutter arbor with steep taper SK 30 / SK 40

Application:

Arbor for single tools with bore or tool sets with bore.

Technical information:

Steep taper design as per DIN ISO 7388, without grooves and notches. Outside dimension A = 63 mm for longer tool length in the machine. Safety device against tool twisting by screw or pin. Arbors are fine balanced. If conical spring washers with safety device against twisting are used, slots are required in the arbor. For suitable mounting device VN 799 0, see section Knives and Spare Parts.

Note: Please comply with the specifications regarding the maximum admissible weight and diameters detailed by the machine manufacturer!

SK 30, A = 63 mm

TI 501 0 01

Type	l mm	d mm	TK	Weight kg	ID
A	70	20	32	1.3	042818 □
A	80	30	48	1.6	042822 □

SK 40, A = 63 mm

TI 501 0 01

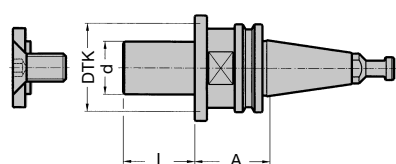
Type	l mm	d mm	TK	Weight kg	ID
E	80	30	48	2.2	042829 □

Sales unit consists of arbor with pull stud, clamping screw and conical spring washer (flat design), without spacers.

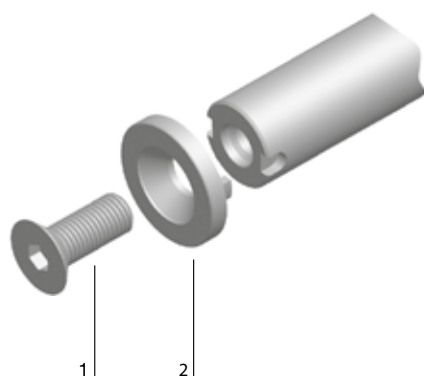
Spare parts:

BEZ	ABM mm	BEM	ID
Washer with safety device against twisting, M10	20/35x13x10.5	for d = 20	006768 ●
Washer with safety device against twisting, M16	30/45x15x16.5	for d = 30	006769 ●
Locking nut with Balluff chip	SK 40, 511 Bytes		081601 ●

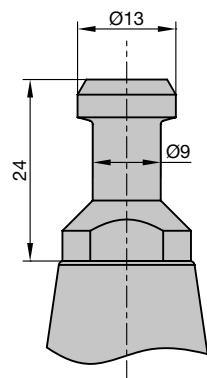
Suitable spacers, see section Knives and Spare Parts.



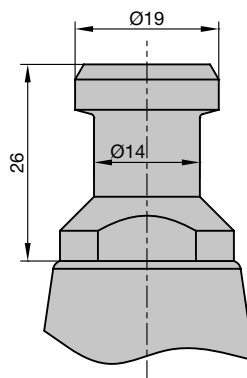
Arbor SK 30/SK 40



- 1 Clamping screw
- 2 Conical spring washer for safety against twisting



Type: A
SK 30 pull stud as per DIN ISO 7388



Type: E
SK 40 pull stud as per DIN ISO 7388



Cutting arbor with hollow taper shank HSK-E 63

Application:

Arbor for single tools with bore or tool sets with bore.

Technical information:

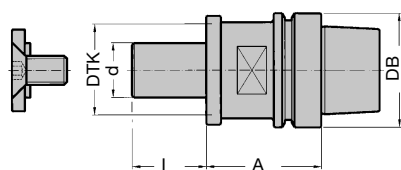
Hollow taper shank design as per DIN 69893. Safety device against tool twisting by screw or pin. Arbors are fine balanced. Spring washers with safety against twisting. For suitable mounting device VN 799 0, see section Knives and Spare Parts.

Note: Please comply with the specifications regarding the maximum admissible weight and diameters detailed by the machine manufacturer.

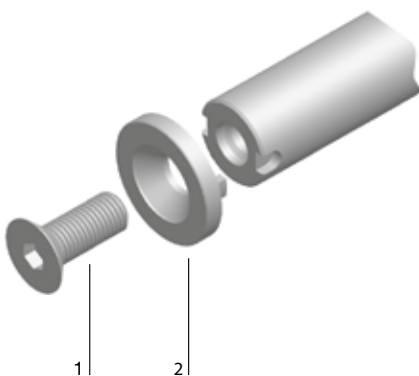
HSK-E 63, DIN 69893, A = 45 mm

TI 501 0 07

l	d	A	DB	TK	Weight	ID
mm	mm	mm	mm		kg	
70	20	45	63	32	1.2	039801 ●
80	30	45	63	48	1.6	039805 ●
140	30	45	63	48	1.9	663071 ●
192	35	45	63	52	2.6	039806 ●



Arbor HSK-E 63



- 1 Clamping screw
- 2 Conical spring washer for safety against twisting

Sales unit consisting of arbor, clamping screw and conical spring washer (flat design) with safety device against twisting, without spacers.

Spare parts:

BEZ	ABM	BEM	ID
	mm		
Washer with safety device against twisting, M10	20/35x13x10.5	for d = 20	006768 ●
Washer with safety device against twisting, M16	30/45x15x16.5	for d = 30	006769 ●
Washer with safety device against twisting, M16	35/50x15x16.5	for d = 35	006770 ●
Chip-Balluff	511 Bytes		081309 ●
Chip-Balluff	2047 Bytes		081330 □

Suitable spacers, see section Knives and Spare Parts.

7. Clamping systems

7.4 Clamping arbors

7.4.2 Cutter arbors



Cutting arbor with hollow taper shank HSK-F 63

Application:

Arbor for single tools with bore or tool sets with bore.

Technical information:

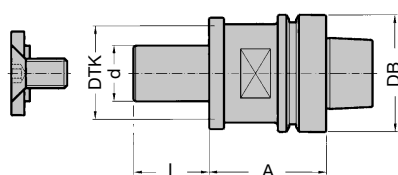
Hollow taper shank design as per DIN 69893. Safety device against tool twisting by screw or pin. Arbors are fine balanced. Spring washers with safety against twisting. For suitable mounting device VN 799 0, see section Knives and Spare Parts.

Note: Preferably use the short model for low vibration cutting. Please comply with the specifications regarding the maximum admissible weight and diameters detailed by the machine manufacturer.

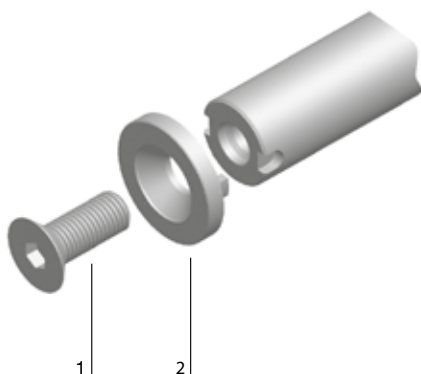
HSK-F 63, DIN 69893, A = 45 mm

TI 501 0 07

l	d	A	DB	TK	Weight	ID
mm	mm	mm	mm		kg	
70	20	45	63	32	1.2	042987 ●
80	30	45	63	48	1.6	042988 ●
140	30	45	63	48	1.9	041426 ●
192	35	45	63	52	2.6	041425 ●



Arbor HSK-F 63



- 1 Clamping screw
- 2 Conical spring washer for safety against twisting

HSK-F 63, DIN 69893, A = 80 mm

TI 501 0 07

l	d	A	DB	TK	Weight	ID
mm	mm	mm	mm		kg	
70	20	80	63	32	1.7	042847 ●
80	30	80	63	48	2.1	042951 ●
120	30	80	63	48	2.4	041427 ●

HSK-F 63, DIN 69893, A = 90 mm

TI 501 0 07

l	d	A	DB	TK	Weight	ID
mm	mm	mm	mm		kg	
170	35	90	63	52	3.2	041428 ●

Sales unit consisting of arbor, clamping screw and conical spring washer (flat design) with safety device against twisting, without spacers.

Spare parts:

BEZ	ABM	BEM	ID
	mm		
Washer with safety device against twisting, M10	20/35x13x10.5	for d = 20	006768 ●
Washer with safety device against twisting, M16	30/45x15x16.5	for d = 30	006769 ●
Washer with safety device against twisting, M16	35/50x15x16.5	for d = 35	006770 ●
Chip-Balluff	511 Bytes		081309 ●
Chip-Balluff	2047 Bytes		081330 □

Suitable spacers, see section Knives and Spare Parts.

Архангельск (8182)63-90-72
Астана (7172)727-132
Астрахань (8512)99-46-04
Барнаул (3852)73-04-60
Белгород (4722)40-23-64
Брянск (4832)59-03-52
Владивосток (423)249-28-31
Волгоград (844)278-03-48
Вологда (8172)26-41-59
Воронеж (473)204-51-73
Екатеринбург (343)384-55-89
Иваново (4932)77-34-06

Ижевск (3412)26-03-58
Иркутск (395)279-98-46
Казань (843)206-01-48
Калининград (4012)72-03-81
Калуга (4842)92-23-67
Кемерово (3842)65-04-62
Киров (8332)68-02-04
Краснодар (861)203-40-90
Красноярск (391)204-63-61
Курск (4712)77-13-04
Липецк (4742)52-20-81
Киргизия (996)312-96-26-47

Магнитогорск (3519)55-03-13
Москва (495)268-04-70
Мурманск (8152)59-64-93
Набережные Челны (8552)20-53-41
Нижний Новгород (831)429-08-12
Новокузнецк (3843)20-46-81
Новосибирск (383)227-86-73
Омск (3812)21-46-40
Орел (4862)44-53-42
Оренбург (3532)37-68-04
Пенза (8412)22-31-16
Россия (495)268-04-70

Пермь (342)205-81-47
Ростов-на-Дону (863)308-18-15
Рязань (4912)46-61-64
Самара (846)206-03-16
Санкт-Петербург (812)309-46-40
Саратов (845)249-38-78
Севастополь (8692)22-31-93
Симферополь (3652)67-13-56
Смоленск (4812)29-41-54
Сочи (862)225-72-31
Ставрополь (8652)20-65-13
Казахстан (772)734-952-31

Сургут (3462)77-98-35
Тверь (4822)63-31-35
Томск (3822)98-41-53
Тула (4872)74-02-29
Тюмень (3452)66-21-18
Ульяновск (8422)24-23-59
Уфа (347)229-48-12
Хабаровск (4212)92-98-04
Челябинск (351)202-03-61
Череповец (8202)49-02-64
Ярославль (4852)69-52-93