



### Cutting arbor with hollow shank taper HSK 85 WS

#### Application:

For mounting saws, cutting tools, sets of cutting tools and cutterheads.

#### Machine:

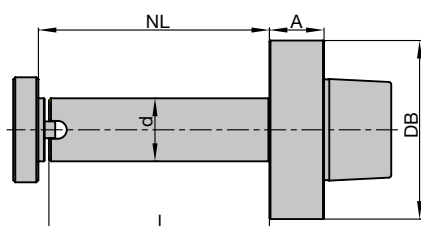
Machines with HSK 85 WS adaptor e.g. moulders (Weinig Powermat), window production machines etc.

#### Technical information:

Easy and safe handling with optional lifting rings.

#### HSK 85 WS, A = 26 mm, for Weinig Powermat without safety device against twisting

TI 501 0 14



Cutting arbor HSK 85 WS with clamping spacer and safety device against twisting

Machine	NL mm	l mm	d mm	A mm	DB mm	ID
Weinig	55	50	30	26	85	<b>663101</b> ●
Weinig	85	80	30	26	85	<b>663102</b> ●
Weinig	110	105	30	26	85	<b>663103</b> ●
Weinig	85	80	40	26	85	<b>663075</b> ●
Weinig	105	100	40	26	85	<b>663083</b> □
Weinig	135	130	40	26	85	<b>663077</b> ●
Weinig	150	145	40	26	85	<b>663084</b> □
Weinig	170	165	40	26	85	<b>663078</b> ●
Weinig	210	205	40	26	85	<b>663085</b> □
Weinig	240	235	40	26	85	<b>663079</b> ●
Weinig	85	80	50	26	85	<b>663076</b> ●
Weinig	105	100	50	26	85	<b>663086</b> □
Weinig	135	130	50	26	85	<b>663080</b> ●
Weinig	150	145	50	26	85	<b>663087</b> □
Weinig	170	165	50	26	85	<b>663081</b> ●
Weinig	210	205	50	26	85	<b>663088</b> □
Weinig	240	235	50	26	85	<b>663082</b> ●

#### Spare parts:

BEZ	ABM mm	BEM	ID
Washer with safety device against twisting	50/20	for d = 30	<b>008376</b> ●
Washer with safety device against twisting	60/20	for d = 40	<b>008368</b> ●
Washer with safety device against twisting	70/20	for d = 50	<b>008369</b> ●
Cylindrical screw with ISK	M8x20	for d = 40/50	<b>114048</b> ●

Архангельск (8182)63-90-72  
Астана (7172)727-132  
Астрахань (8512)99-46-04  
Барнаул (3852)73-04-60  
Белгород (4722)40-23-64  
Брянск (4832)59-03-52  
Владивосток (423)249-28-31  
Волгоград (844)278-03-48  
Вологда (8172)26-41-59  
Воронеж (473)204-51-73  
Екатеринбург (343)384-55-89  
Иваново (4932)77-34-06

Ижевск (3412)26-03-58  
Иркутск (395)279-98-46  
Казань (843)206-01-48  
Калининград (4012)72-03-81  
Калуга (4842)92-23-67  
Камерово (3842)65-04-62  
Киров (8332)68-02-04  
Краснодар (861)203-40-90  
Красноярск (391)204-63-61  
Курск (4712)77-13-04  
Липецк (4742)52-20-81  
Киргизия (996)312-96-26-47

Магнитогорск (3519)55-03-13  
Москва (495)268-04-70  
Мурманск (8152)59-64-93  
Набережные Челны (8552)20-53-41  
Нижний Новгород (831)429-08-12  
Новокузнецк (3843)20-46-81  
Новосибирск (383)227-86-73  
Омск (3812)21-46-40  
Орел (4862)44-53-42  
Оренбург (3532)37-68-04  
Пенза (8412)22-31-16  
Россия (495)268-04-70

Пермь (342)205-81-47  
Ростов-на-Дону (863)308-18-15  
Рязань (4912)46-61-64  
Самара (846)206-03-16  
Санкт-Петербург (812)309-46-40  
Саратов (845)249-38-78  
Севастополь (8692)22-31-93  
Симферополь (3652)67-13-56  
Смоленск (4812)29-41-54  
Сочи (862)225-72-31  
Ставрополь (8652)20-65-13  
Казахстан (772)734-952-31

Сургут (3462)77-98-35  
Тверь (4822)63-31-35  
Томск (3822)98-41-53  
Тула (4872)74-02-29  
Тюмень (3452)66-21-18  
Ульяновск (8422)24-23-59  
Уфа (347)229-48-12  
Хабаровск (4212)92-98-04  
Челябинск (351)202-03-61  
Череповец (8202)49-02-64  
Ярославль (4852)69-52-93

## 7. Clamping systems

### 7.4 Clamping arbors

#### 7.4.2 Cutter arbors

#### Cutting arbor with hollow shank taper HSK 85 WS



**Application:**

For mounting saws, cutting tools, sets of cutting tools and cutterheads.

**Machine:**

Machines with HSK 85 WS adaptor e.g. moulders (Weinig Powermat), window production machines etc.

**Technical information:**

Easy and safe handling with optional lifting rings.

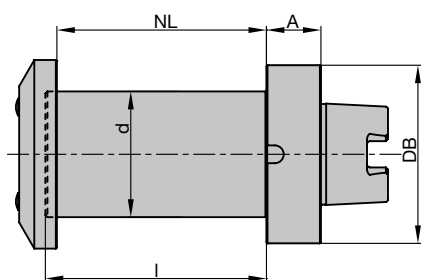
**HSK 85 WS, A = 26 mm, for Weinig Powermat with two safety device grooves against twisting in the HSK**

TI 501 0 16

Machine	NL mm	l mm	d mm	A mm	DB mm	ID
Weinig	170	165	40	26	85	663104 □
Weinig	240	235	40	26	85	663105 □
Weinig	100	105.5	60	26	85	663106 ●

**Spare parts:**

BEZ	ABM mm	for d mm	ID
Washer with safety device against twisting	60/20	40	008370 ●
Washer with safety device against twisting	90/18	60	008379 ●
Cylindrical screw with ISK	M8x20	40/60	114048 ●



Cutting arbor HSK 85 WS with clamping spacer and safety device against twisting in HSK.

#### Cutting arbor with hollow shank taper HSK 85



**Application:**

For mounting saws, cutting tools, sets of cutting tools and cutterheads.

**Machine:**

Machines with HSK 85 WS adaptor e.g. moulders, window production machines etc.

**Technical information:**

Easy and safe handling with optional lifting rings.

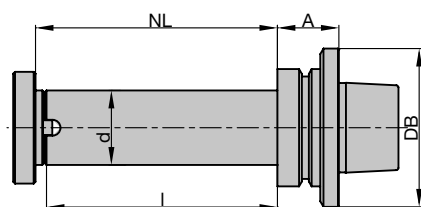
**HSK 85, A = 26 mm and A = 33 mm, for SCM**

TI 501 0 14

Machine	NL mm	l mm	d mm	A mm	DB mm	ID
SCM	130	127	40	33	63	663061 ●
SCM	319	325	50	26	85	663055 ●

**Spare parts:**

BEZ	ABM mm	for d mm	ID
Washer with safety device against twisting	60/20	40	008370 ●
Washer with safety device against twisting	70/20	50	008375 ●
Cylindrical screw with ISK	M8x20	40	114048 ●
Cylindrical screw with ISK	M8x35	50	006524 ●



Cutting arbor HSK 85 - TI 501 0 14

## 7. Clamping systems

### 7.4 Clamping arbors

#### 7.4.2 Cutter arbors



#### Blanking arbor HSK 85 WS

**Application:**

Dust cover for spindles when not in use.

**Machine:**

Machines with HSK 85 WS adaptor e.g. moulders (Weinig Powermat), window production machines etc.

**Blanking arbor for Weinig Powermat**

TI 501 0 14

Machine	ID
Weinig	663044 ●



#### Lifting ring, HSK 85 WS

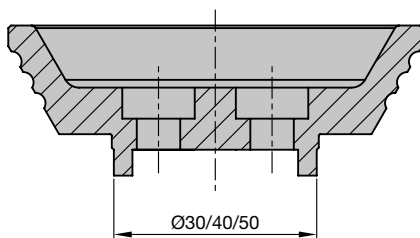
**Application:**

Lifting rings can be mounted on arbors for easy and safe tool handling.

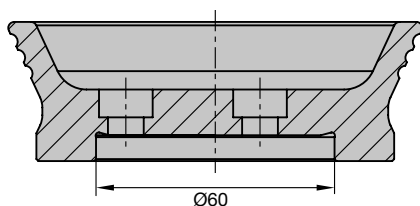
**Lifting ring for HSK 85 WS arbors**

TK 540 0

Machine	BEZ	ABM mm	TK	ID
Weinig	Spindle lifting rings	for d=30 with safety device against twisting	18	008378 ●
Weinig	Spindle lifting rings	for d=40 with safety device against twisting	25	008365 ●
Weinig	Spindle lifting rings	for d=50 with safety device against twisting	32	008366 ●
Weinig	Spindle lifting rings	for d=60 with safety device against twisting	45	008380 ●



ID 008378/ 008365 / 008366



ID 008380

Архангельск (8182)63-90-72  
Астана (7172)727-132  
Астрахань (8512)99-46-04  
Барнаул (3852)73-04-60  
Белгород (4722)40-23-64  
Брянск (4832)59-03-52  
Владивосток (423)249-28-31  
Волгоград (844)278-03-48  
Вологда (8172)26-41-59  
Воронеж (473)204-51-73  
Екатеринбург (343)384-55-89  
Иваново (4932)77-34-06

Ижевск (3412)26-03-58  
Иркутск (395)279-98-46  
Казань (843)206-01-48  
Калининград (4012)72-03-81  
Калуга (4842)92-23-67  
Кемерово (3842)65-04-62  
Киров (8332)68-02-04  
Краснодар (861)203-40-90  
Красноярск (391)204-63-61  
Курск (4712)77-13-04  
Липецк (4742)52-20-81  
Киргизия (996)312-96-26-47

Магнитогорск (3519)55-03-13  
Москва (495)268-04-70  
Мурманск (8152)59-64-93  
Набережные Челны (8552)20-53-41  
Нижний Новгород (831)429-08-12  
Новокузнецк (3843)20-46-81  
Новосибирск (383)227-86-73  
Омск (3812)21-46-40  
Орел (4862)44-53-42  
Оренбург (3532)37-68-04  
Пенза (8412)22-31-16  
Россия (495)268-04-70

Пермь (342)205-81-47  
Ростов-на-Дону (863)308-18-15  
Рязань (4912)46-61-64  
Самара (846)206-03-16  
Санкт-Петербург (812)309-46-40  
Саратов (845)249-38-78  
Севастополь (8692)22-31-93  
Симферополь (3652)67-13-56  
Смоленск (4812)29-41-54  
Сочи (862)225-72-31  
Ставрополь (8652)20-65-13  
Казахстан (772)734-952-31

Сургут (3462)77-98-35  
Тверь (4822)63-31-35  
Томск (3822)98-41-53  
Тула (4872)74-02-29  
Тюмень (3452)66-21-18  
Ульяновск (8422)24-23-59  
Уфа (347)229-48-12  
Хабаровск (4212)92-98-04  
Челябинск (351)202-03-61  
Череповец (8202)49-02-64  
Ярославль (4852)69-52-93