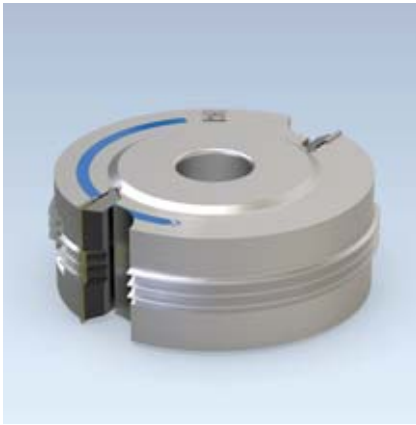


4.3 Longitudinal, width and mitre joints

4.3.1 Glue joint cutterheads



Profile cutterhead ProfilCut Q for glue joint profiles

Application:

To cut glue joint profiles with high fit accuracy. Profile P2-4 for processing with the grain for precise positioning of the wood to be glued. Profile 1 is especially suitable for mitre joint profile/longitudinal glue joint profile and for frames.

Machine:

Spindle moulders and moulders.

Workpiece material:

Softwood and hardwood.

Technical information:

Finger profile in rounded design (softline). Effective wood use through small profile depth.



MAN feed

WE 600 1 53

P	D mm	SB mm	BO mm	BO _{max} mm	Z	n min ⁻¹	ID
1	135	30	30	50	2	5700 - 9900	125125 ●
2	135	50	30	50	2	5700 - 9900	125126 ●
3	135	60	30	50	2	5700 - 9900	125127 ●
3	135	60	50	50	2	5700 - 9900	125390 □
4	135	80	30	50	2	5700 - 9900	125128 ●

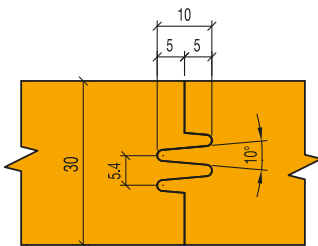
Spare knives:

Part-no.	BEZ	ABM mm	QAL	ID
1	ProfilCut Q knife	30x16x2	MC	619237 ●
1	ProfilCut Q knife	50x16x2	MC	619234 ●
1	ProfilCut Q knife	60x16x2	MC	619235 ●
1	ProfilCut Q knife	80x16x2	MC	619236 ●

Spare parts:

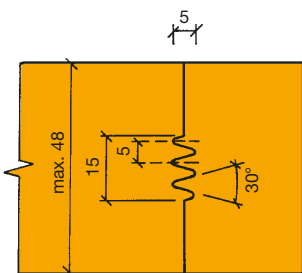
Part-no.	BEZ	ABM mm	ID
2	Clamping wedge profiled	48x23.73x8.27	629219
2	Clamping wedge profiled	58x23.73x8.27	629220
2	Clamping wedge profiled	78x23.73x8.27	629221
2	Clamping wedge profiled	28x23.73x8.27	629222
3	Clamping screw w. disc, Torx® 25	M6x18.5	007442 ●
4	Torx® key	Torx® 25	117504 ●

Mitre joint/longitudinal glue joint profile

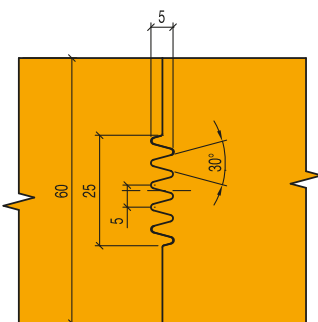


P1

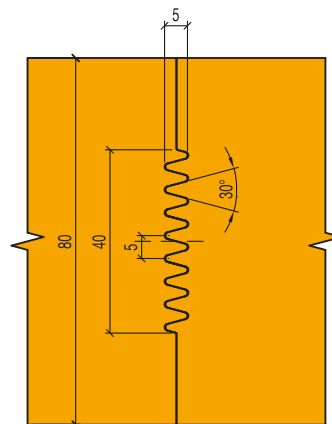
Width glue joint profile



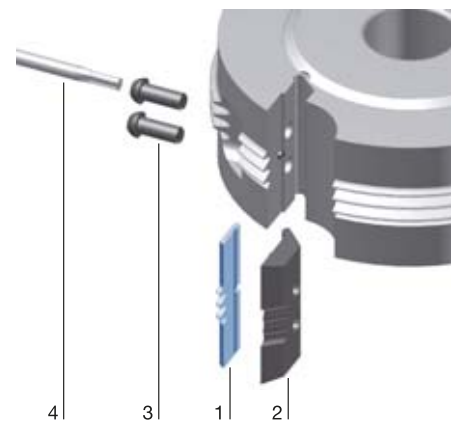
P2



P3



P4



Архангельск (8182)63-90-72
Астана (7172)727-132
Астрахань (8512)99-46-04
Барнаул (3852)73-04-60
Белгород (4722)40-23-64
Брянск (4832)59-03-52
Владивосток (423)249-28-31
Волгоград (844)278-03-48
Вологда (8172)26-41-59
Воронеж (473)204-51-73
Екатеринбург (343)384-55-89
Иваново (4932)77-34-06

Ижевск (3412)26-03-58
Иркутск (395)279-98-46
Казань (843)206-01-48
Калининград (4012)72-03-81
Калуга (4842)92-23-67
Кемерово (3842)65-04-62
Киров (8332)68-02-04
Краснодар (861)203-40-90
Красноярск (391)204-63-61
Курск (4712)77-13-04
Липецк (4742)52-20-81
Киргизия (996)312-96-26-47

Магнитогорск (3519)55-03-13
Москва (495)268-04-70
Мурманск (8152)59-64-93
Набережные Челны (8552)20-53-41
Нижний Новгород (831)429-08-12
Новокузнецк (3843)20-46-81
Новосибирск (383)227-86-73
Омск (3812)21-46-40
Орел (4862)44-53-42
Оренбург (3532)37-68-04
Пенза (8412)22-31-16
Россия (495)268-04-70

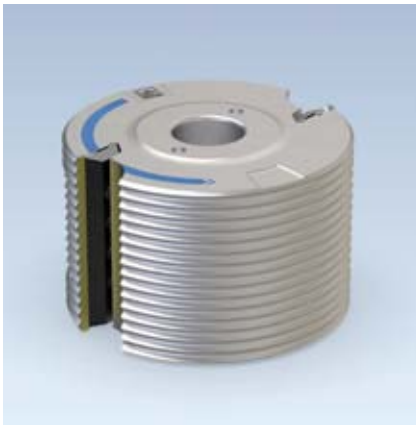
Пермь (342)205-81-47
Ростов-на-Дону (863)308-18-15
Рязань (4912)46-61-64
Самара (846)206-03-16
Санкт-Петербург (812)309-46-40
Саратов (845)249-38-78
Севастополь (8692)22-31-93
Симферополь (3652)67-13-56
Смоленск (4812)29-41-54
Сочи (862)225-72-31
Ставрополь (8652)20-65-13
Казахстан (772)734-952-31

Сургут (3462)77-98-35
Тверь (4822)63-31-35
Томск (3822)98-41-53
Тула (4872)74-02-29
Тюмень (3452)66-21-18
Ульяновск (8422)24-23-59
Уфа (347)229-48-12
Хабаровск (4212)92-98-04
Челябинск (351)202-03-61
Череповец (8202)49-02-64
Ярославль (4852)69-52-93

4. Manual feed

4.3 Longitudinal, width and mitre joints

4.3.1 Glue joint cutterheads



Profile cutterhead ProfilCut Q for glue joint profiles

Application:

To cut glue joint profiles in fibre direction with high fit accuracy.

Machine:

Spindle moulders and moulders.

Workpiece material:

Softwood and hardwood.

Technical information:

Finger profile in rounded design (softline). Effective wood use through small profile depth.



Profile cutterhead set

SE 600 1 53

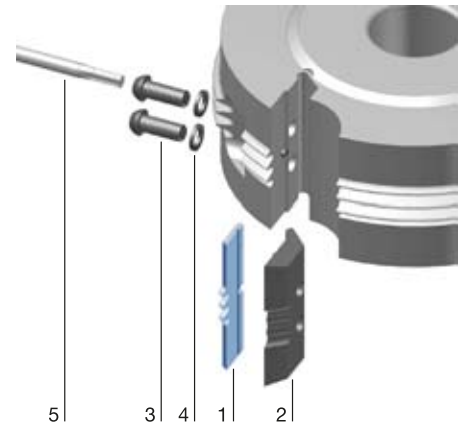
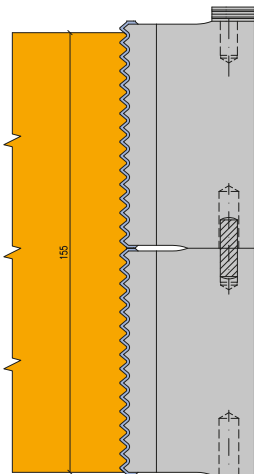
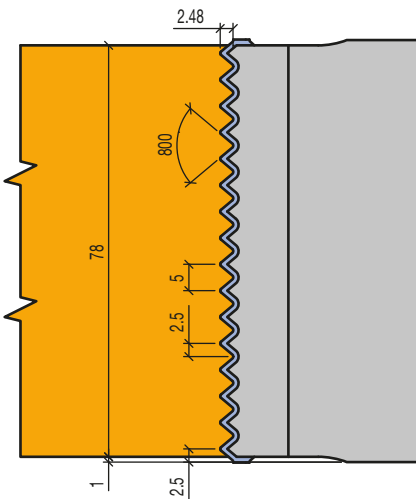
D	SB	BO	Z	ID
mm	mm	mm		
125	78	30	2	126097 ●
125	78	50	2	126098 ●

Spare knives:

Part-no.	BEZ	ABM	QAL	ID
		mm		
1	ProfilCut Q knife	80.2x14x2.4	MC	619523

Spare parts:

Part-no.	BEZ	ABM	ID
		mm	
2	Clamping wedge profiled	78x20x8.27	629214
3	Clamping screw w. disc, Torx® 25	M6x18.5	007442 ●
4	Torx® key	Torx® 25	117504 ●

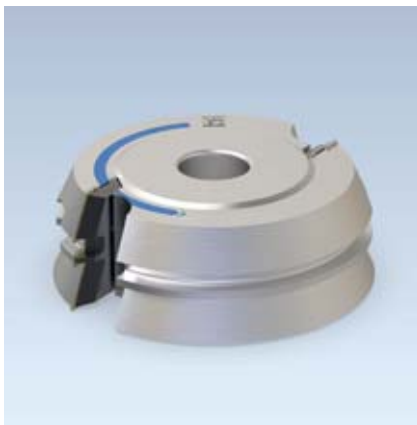


Tool stackable

4. Manual feed

4.3 Longitudinal, width and mitre joints

4.3.2 Mitre joint cutterheads



Profile cutterhead ProfilCut Q for glue joints along the grain and mitre joints

Application:

For glue joint profiles along grain with precise positioning. Exact positioning of the wood to be glued together and for producing corner joints.

Machine:

Spindle moulders and moulders.

Workpiece material:

Softwood and hardwood, veneered panel materials.

Technical information:

Wood thickness 15 to 48 mm; basic clearance 0.3 mm, side clearance 0.1 mm. Economic wood use due to small profile depth.



Profile depth 6.4 mm

WE 600 1 53

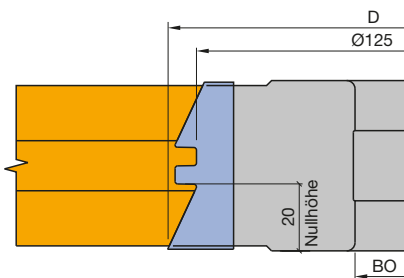
D	SB	BO	BO _{max}	Z	n	ID
mm	mm	mm	mm		min ⁻¹	
142	50	30	50	2	5500 - 9400	125129

Spare knives:

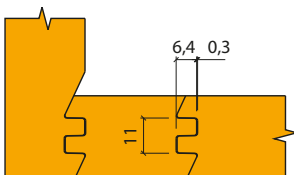
Part-no.	BEZ	ABM	QAL	ID
		mm		
1	ProfilCut Q knife	50x22x2	MC	619238

Spare parts:

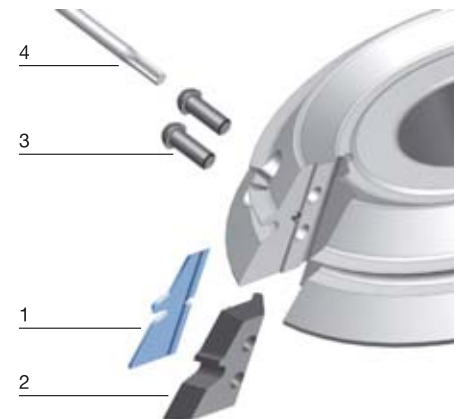
Part-no.	BEZ	ABM	ID
		mm	
2	Clamping wedge profiled	48x31.93x8.27	629223
3	Clamping screw w. disc, Torx® 25	M6x18.5	007442 ●
4	Torx® key	Torx® 25	117504 ●



Adjustment scheme



Profile example



Архангельск (8182)63-90-72
Астана (7172)727-132
Астрахань (8512)99-46-04
Барнаул (3852)73-04-60
Белгород (4722)40-23-64
Брянск (4832)59-03-52
Владивосток (423)249-28-31
Волгоград (844)278-03-48
Вологда (8172)26-41-59
Воронеж (473)204-51-73
Екатеринбург (343)384-55-89
Иваново (4932)77-34-06

Ижевск (3412)26-03-58
Иркутск (395)279-98-46
Казань (843)206-01-48
Калининград (4012)72-03-81
Калуга (4842)92-23-67
Кемерово (3842)65-04-62
Киров (8332)68-02-04
Краснодар (861)203-40-90
Красноярск (391)204-63-61
Курск (4712)77-13-04
Липецк (4742)52-20-81
Киргизия (996)312-96-26-47

Магнитогорск (3519)55-03-13
Москва (495)268-04-70
Мурманск (8152)59-64-93
Набережные Челны (8552)20-53-41
Нижний Новгород (831)429-08-12
Новокузнецк (3843)20-46-81
Новосибирск (383)227-86-73
Омск (3812)21-46-40
Орел (4862)44-53-42
Оренбург (3532)37-68-04
Пенза (8412)22-31-16
Россия (495)268-04-70

Пермь (342)205-81-47
Ростов-на-Дону (863)308-18-15
Рязань (4912)46-61-64
Самара (846)206-03-16
Санкт-Петербург (812)309-46-40
Саратов (845)249-38-78
Севастополь (8692)22-31-93
Симферополь (3652)67-13-56
Смоленск (4812)29-41-54
Сочи (862)225-72-31
Ставрополь (8652)20-65-13
Казахстан (772)734-952-31

Сургут (3462)77-98-35
Тверь (4822)63-31-35
Томск (3822)98-41-53
Тула (4872)74-02-29
Тюмень (3452)66-21-18
Ульяновск (8422)24-23-59
Уфа (347)229-48-12
Хабаровск (4212)92-98-04
Челябинск (351)202-03-61
Череповец (8202)49-02-64
Ярославль (4852)69-52-93