

2. Panel processing

2.1 Edge processing

2.1.7 Edge finishing tools



Pre / finishing edge trimming cutter

Application:

To trim edgebandings on horizontal spindles or for bevelling with inclined spindles.

Machine:

Single or double-sided edgebanding machines.

Workpiece material:

Plastic, softwood, hardwood and veneer edgebander.

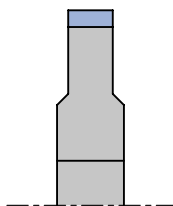
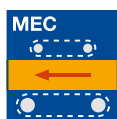
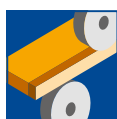
Technical information:

HW/DP tipped tools with cylindrical bore. DP tools - 3 mm tip height.

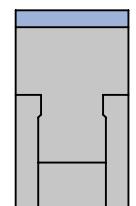
Joining cutter

WF 200 2, WF 200 2 DP, WF 210 2 DP

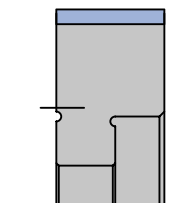
Machine	D mm	SB mm	ND mm	BO mm	Type	Z	QAL	n_{max} min ⁻¹	ID LH	ID RH
Biesse	70	10	12	16	DKN 1	6	DP	18000	090899 ●	090899 ●
Biesse	70	20	12	16	DKN 2	6	DP	18000	090893	090893
Biesse	80	22	12	16	DKN 3	6	DP	18000	192103 ●	192102 ●
Brandt	70	10	12	16	DKN 1	6	DP	18000	090899 ●	090899 ●
Brandt	70	20	12	16	DKN 2	6	DP	18000	090893	090893
Brandt	70	25	25	16	DKN 3	4	HW	18000	065588 ●	065589 ●
Fraval	80	30	27.5	20	DKN 3	4	DP	18000	192270 ●	192271 ●
Holz-Her 1828	70	19.5	19.5	20	DKN 4	4	HW	18000	065592	065593
Ott	70	16.5	10	16	DKN 3	4	DP	18000	192283 ●	192284 ●
Stefani	80	20	11	16	DKN 2	4	DP	18000	192110 ●	192111 ●



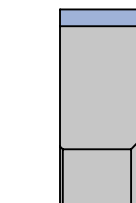
Type 1



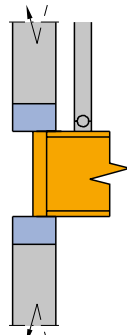
Type 2



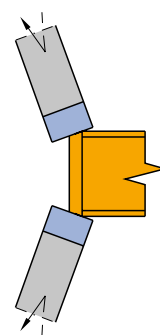
Type 3



Type 4



Trimming of edges on horizontal spindle
- top motor tracing.



Bevelling of edges with inclined spindle.

Архангельск (8182)63-90-72
Астана (7172)727-132
Астрахань (8512)99-46-04
Барнаул (3852)73-04-60
Белгород (4722)40-23-64
Брянск (4832)59-03-52
Владивосток (423)249-28-31
Волгоград (844)278-03-48
Вологда (8172)26-41-59
Воронеж (473)204-51-73
Екатеринбург (343)384-55-89
Иваново (4932)77-34-06

Ижевск (3412)26-03-58
Иркутск (395)279-98-46
Казань (843)206-01-48
Калининград (4012)72-03-81
Калуга (4842)92-23-67
Кемерово (3842)65-04-62
Киров (8332)68-02-04
Краснодар (861)203-40-90
Красноярск (391)204-63-61
Курск (4712)77-13-04
Липецк (4742)52-20-81
Киргизия (996)312-96-26-47

Магнитогорск (3519)55-03-13
Москва (495)268-04-70
Мурманск (8152)59-64-93
Набережные Челны (8552)20-53-41
Новокузнецк (3843)20-46-81
Новосибирск (383)227-86-73
Омск (3812)21-46-40
Орел (4862)44-53-42
Оренбург (3532)37-68-04
Пенза (8412)22-31-16
Россия (495)268-04-70

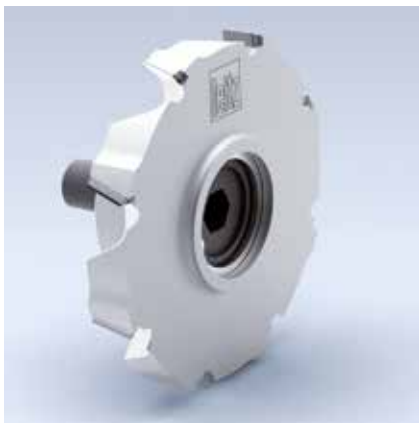
Пермь (342)205-81-47
Ростов-на-Дону (863)308-18-15
Рязань (4912)46-61-64
Самара (846)206-03-16
Санкт-Петербург (812)309-46-40
Саратов (845)249-38-78
Севастополь (8692)22-31-93
Симферополь (3652)67-13-56
Смоленск (4812)29-41-54
Сочи (862)225-72-31
Ставрополь (8652)20-65-13
Казахстан (772)734-952-31

Сургут (3462)77-98-35
Тверь (4822)63-31-35
Томск (3822)98-41-53
Тула (4872)74-02-29
Тюмень (3452)66-21-18
Ульяновск (8422)24-23-59
Уфа (347)229-48-12
Хабаровск (4212)92-98-04
Челябинск (351)202-03-61
Череповец (8202)49-02-64
Ярославль (4852)69-52-93

2. Panel processing

2.1 Edge processing

2.1.7 Edge finishing tools



Pre / finishing edge trimming cutter *iQsystem*

Application:

To trim edgebandings on horizontal spindles or for bevelling with inclined spindles.

Machine:

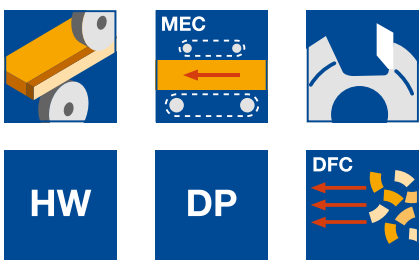
Single or double-sided edgebanding machines. Machines combined with special extraction hood i-System for efficient chip clearance.

Workpiece material:

Plastic, softwood, hardwood and veneer edgebander.

Technical information:

HW/DP tipped tools with HSK 25 R adaptor and a special extraction hood i-System for efficient chip collection (approx. 97%) with reduced extraction energy consumption. Clean workpieces, no interference with scanning aggregates and less rework. High concentricity.
DP tools - 3 mm tip height.



Joining cutter *iQsystem* - HSK 25 R

WF 200 2 DP, WF 210 2

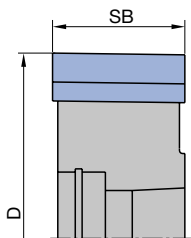
Machine	D	SB	BO	Z	QAL	n_{\max}	ID	ID
	mm	mm	mm			min ⁻¹	LH	RH
Homag, IMA	70	25	HSK 25 R	4	HW	18000	073092 ●	073093 ●
Homag, IMA	70	8	HSK 25 R	4	DP	18000	198472 ●	198473 ●
Homag, IMA	70	8	HSK 25 R	6	DP	18000	198474 ●	198475 ●
Homag, IMA	70	8	HSK 25 R	8	DP	18000	198404 ●	198405 ●
Homag, IMA	70	15	HSK 25 R	4	DP	18000	198406 ●	198407 ●
Homag, IMA	70	15	HSK 25 R	6	DP	18000	198468 ●	198469 ●

Recommended number of teeth:

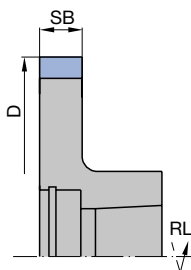
Feed rates of up to 35 m min⁻¹ Z 4

Feed rates of up to 60 m min⁻¹ Z 6

Feed rates of up to 100 m min⁻¹ Z 8 (thin edge)



HW jointing cutter with HSK 25 R adaptor, SB=25 mm



DP jointing cutter with HSK 25 R adaptor

Архангельск (8182)63-90-72
Астана (7172)727-132
Астрахань (8512)99-46-04
Барнаул (3852)73-04-60
Белгород (4722)40-23-64
Брянск (4832)59-03-52
Владивосток (423)249-28-31
Волгоград (844)278-03-48
Вологда (8172)26-41-59
Воронеж (473)204-51-73
Екатеринбург (343)384-55-89
Иваново (4932)77-34-06

Ижевск (3412)26-03-58
Иркутск (395)279-98-46
Казань (843)206-01-48
Калининград (4012)72-03-81
Калуга (4842)92-23-67
Кемерово (3842)65-04-62
Киров (8332)68-02-04
Краснодар (861)203-40-90
Красноярск (391)204-63-61
Курск (4712)77-13-04
Липецк (4742)52-20-81
Киргизия (996)312-96-26-47

Магнитогорск (3519)55-03-13
Москва (495)268-04-70
Мурманск (8152)59-64-93
Набережные Челны (8552)20-53-41
Нижний Новгород (831)429-08-12
Новокузнецк (3843)20-46-81
Новосибирск (383)227-86-73
Омск (3812)21-46-40
Орел (4862)44-53-42
Оренбург (3532)37-68-04
Пенза (8412)22-31-16
Россия (495)268-04-70

Пермь (342)205-81-47
Ростов-на-Дону (863)308-18-15
Рязань (4912)46-61-64
Самара (846)206-03-16
Санкт-Петербург (812)309-46-40
Саратов (845)249-38-78
Севастополь (8692)22-31-93
Симферополь (3652)67-13-56
Смоленск (4812)29-41-54
Сочи (862)225-72-31
Ставрополь (8652)20-65-13
Казахстан (772)734-952-31

Сургут (3462)77-98-35
Тверь (4822)63-31-35
Томск (3822)98-41-53
Тула (4872)74-02-29
Тюмень (3452)66-21-18
Ульяновск (8422)24-23-59
Уфа (347)229-48-12
Хабаровск (4212)92-98-04
Челябинск (351)202-03-61
Череповец (8202)49-02-64
Ярославль (4852)69-52-93