

Jointing and Rebating cutter Diamaster PRO

Application:

Optimized for rebating and jointing with and against feed (e.g. jump cutting). Manual feed only against feed.

Machine:

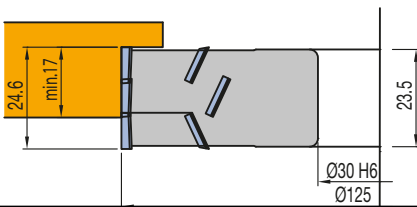
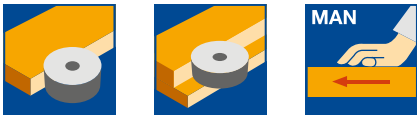
Spindle moulders and edgebanding machines, double-end tenoners.

Workpiece material:

Softwood and hardwood, chipboard and fibre materials (MDF, HDF etc.) uncoated, laminated veneer lumber (plywood etc.), plastomers, solid surface material (Corian, Varicor etc.) fibre reinforced plastics (GFRP, CFRP etc.).

Technical information:

Composite tool with alternate shear angle and main blades with pre-cutting function. Long performance times through polished cutting area. Diamaster PRO design for two resharpening cycles with standard wear. Double sided rebating possible. For larger cutting widths a stacking of various tools is possible. 3.5 mm tipping height. 1.5 mm resharpening area.



Diamaster PRO

WF 400 1 DP

D	SB	BO	Z	ID
mm	mm	mm		
125	24.6	30	2/2/2	090853 ●
125	24.6	30	2/2/2	090872 ●

RPM: $n = 6200 - 13600 \text{ min}^{-1}$



Rebating cutter

Application:

To rebate the core to uncover and trim the edge of the top layer.

Machine:

Postforming machines.

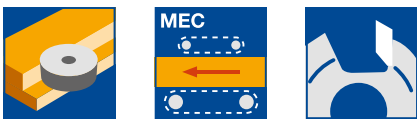
Workpiece material:

HPL, CPL or veneer coated chip and fibre boards (particle board, MDF etc.).

Technical information:

DP tipped tools with HSK 25 R adaptor. High number of teeth removes the need for pre-scoring.

DP tools - 2.0 mm resharpening area.



Diamaster PRO

WF 499 2

Machine	D	SB	BO	Z	n_{\max}	ID	ID
	mm	mm	mm		min^{-1}	LH	RH
Homag, IMA	70	25	HSK 25 R	9+3	18000	091796	091797

Архангельск (8182)63-90-72
Астана (7172)727-132
Астрахань (8512)99-46-04
Барнаул (3852)73-04-60
Белгород (4722)40-23-64
Брянск (4832)59-03-52
Владивосток (423)249-28-31
Волгоград (844)278-03-48
Вологда (8172)26-41-59
Воронеж (473)204-51-73
Екатеринбург (343)384-55-89
Иваново (4932)77-34-06

Ижевск (3412)26-03-58
Иркутск (395)279-98-46
Казань (843)206-01-48
Калининград (4012)72-03-81
Калуга (4842)92-23-67
Кемерово (3842)65-04-62
Киров (8332)68-02-04
Краснодар (861)203-40-90
Красноярск (391)204-63-61
Курск (4712)77-13-04
Липецк (4742)52-20-81
Киргизия (996)312-96-26-47

Магнитогорск (3519)55-03-13
Москва (495)268-04-70
Мурманск (8152)59-64-93
Набережные Челны (8552)20-53-41
Нижегород (831)429-08-12
Новокузнецк (3843)20-46-81
Новосибирск (383)227-86-73
Омск (3812)21-46-40
Орел (4862)44-53-42
Оренбург (3532)37-68-04
Пенза (8412)22-31-16
Россия (495)268-04-70

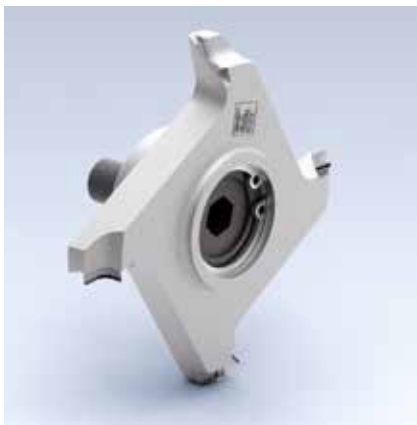
Пермь (342)205-81-47
Ростов-на-Дону (863)308-18-15
Рязань (4912)46-61-64
Самара (846)206-03-16
Санкт-Петербург (812)309-46-40
Саратов (845)249-38-78
Севастополь (8692)22-31-93
Симферополь (3652)67-13-56
Смоленск (4812)29-41-54
Сочи (862)225-72-31
Ставрополь (8652)20-65-13
Казахстан (772)734-952-31

Сургут (3462)77-98-35
Тверь (4822)63-31-35
Томск (3822)98-41-53
Тула (4872)74-02-29
Тюмень (3452)66-21-18
Ульяновск (8422)24-23-59
Уфа (347)229-48-12
Хабаровск (4212)92-98-04
Челябинск (351)202-03-61
Череповец (8202)49-02-64
Ярославль (4852)69-52-93

<https://leitz.nt-rt.ru/> || lzt@nt-rt.ru

2. Panel processing

2.1 Edge processing 2.1.7 Edge finishing tools



Profile cutter

Application:

To round edgebandings.

Machine:

Single or double-sided edgebanding machines.

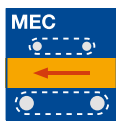
Workpiece material:

Plastic, softwood, hardwood and veneer edgebander.

Technical information:

DP tipped tools with cylindrical bore or HSK 25 R adaptor. D_0 = constant reference diameter.

DP tools - 3 mm tip height.



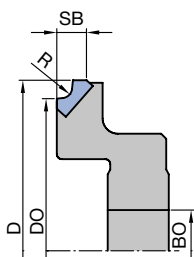
Various radii

WF 501 2, WF 501 2 DP, WF 502 2 DP, WF 599 2

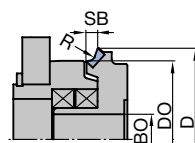
Machine	D	D_0	BO	Z	QAL	R	Type	n_{max}	ID	ID
	mm	mm	mm			mm		min^{-1}	LH	RH
Biesse	67	60	16 DKN	6	DP	1.0	1	18000	091960 ●	091961 ●
Biesse	68	60	16 DKN	6	DP	2.0	1	18000	091962 ●	091963 ●
Biesse	70	60	16 DKN	6	DP	3.0	1	18000	091964 ●	091965 ●
Biesse	72	70	16 KN	6	DP	1.0	5	18000	192518 ●	192519 ●
Biesse	73	70	16 KN	6	DP	2.0	5	18000	192520 ●	192521 ●
Biesse	75	70	16 KN	6	DP	3.0	5	18000	192522 ●	192523 ●
** Brandt	58	50	16 DKN	4	DP	1.5	2	18000		192602 ●
* Brandt	58	50	16 DKN	4	DP	2.0	2	12000		091966 ●
** Brandt	58	50	16 DKN	4	DP	2.0	2	18000		192603 ●
Brandt	70	62	HSK 25 R 4	DP	1.0	7	18000	192588 ●	192589 ●	
Brandt	70	62	HSK 25 R 4	DP	1.3	7	18000	192590 ●	192591 ●	
Brandt	70	62	HSK 25 R 4	DP	1.5	7	18000	192592 ●	192593 ●	
Brandt	70	62	HSK 25 R 4	DP	2.0	7	18000	192594 ●	192595 ●	
Brandt	70	62	HSK 25 R 4	DP	3.0	7	18000	192596 ●	192597 ●	

* = For Brandt edge trimming cutter with keyed and torque support.

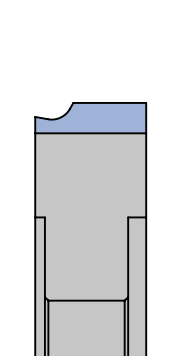
** = For Brandt edge trimming cutter with keyed (without torque support).



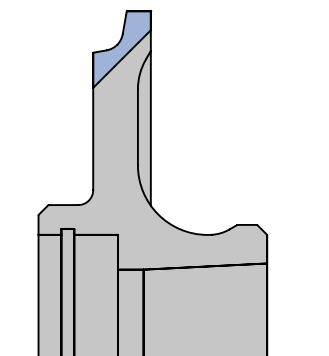
Type 1



Type 2



Type 5

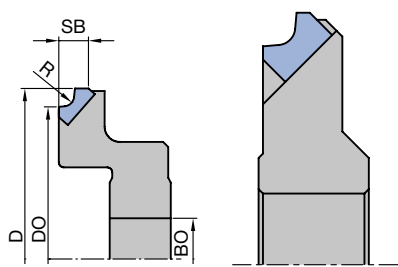


Type 7

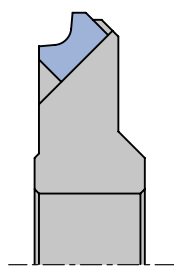
2. Panel processing

2.1 Edge processing

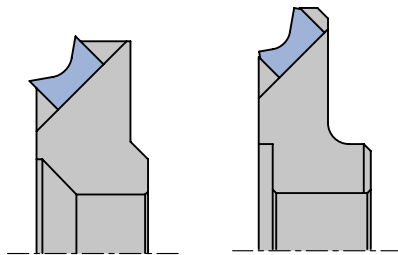
2.1.7 Edge finishing tools



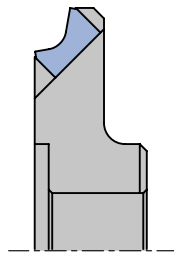
Type 1



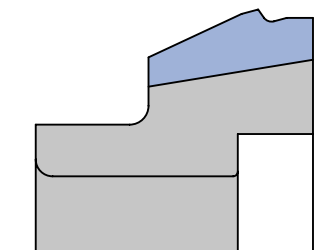
Type 3



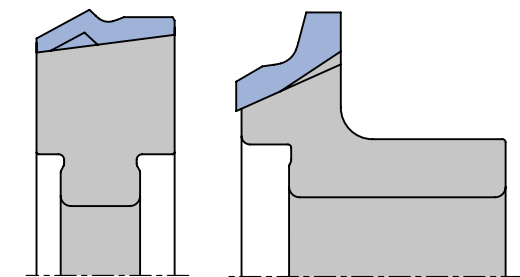
Type 4



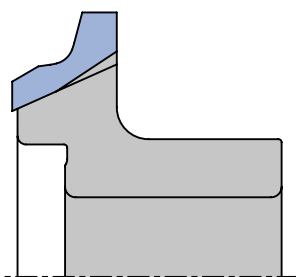
Type 6



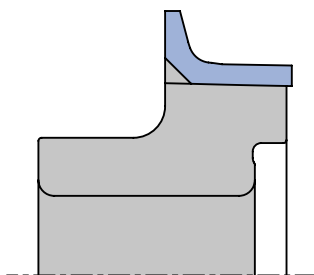
Type 8



Type 9



Type 10



Type 11

Various radii

WF 501 2, WF 501 2 DP, WF 502 2 DP, WF 599 2

Machine	D	D ₀	BO	Z	QAL	R	Type	n _{max}	ID	ID
	mm	mm	mm			mm		min ⁻¹	LH	RH
Fravol	50	39.91	15 KN	4	DP	1-3	11	18000		192665 ●
Fravol	50	40.1	15 KN	4	DP	1-3	10	18000	192663 ●	192664 ●
Fravol	50	39.91	15 KN	6	HW	1-3	11	18000		065594 ●
Fravol	73	71.15	20 DKN	4	DP	1-3	8	18000	192645 ●	192646 ●
Fravol	76.8	74.71	20 DKN	4	DP	1-3	9	18000	192647 ●	192648 ●
Hebrock/EBM	32	24	14 DKN	2	DP	2.0	3	18000	074526 ●	
Hebrock/EBM	56	49.7	16 DKN	2	DP	2.0	6	18000	192669 ●	192670 ●
Hebrock/EBM	56	49.7	16 DKN	2	DP	2.5	6	18000	192641 ●	192642 ●
Holz-Her 1825	57	50	16 DKN	2	DP	2.0	3	24000	192536 ●	192537 ●
Holz-Her 1825	57	50	16 DKN	2	DP	2.5	3	24000	192538 ●	192539 ●
Holz-Her 1825	57	50	16 DKN	2	DP	3.0	3	24000	192540 ●	192541 ●
Holz-Her 1827	56	50	20 DKN	2	DP	2.0	4	24000	192506 ●	192507 ●
Holz-Her 1827	56	50	20 DKN	2	DP	2.5	4	24000	192508 ●	192509 ●
Holz-Her 1827	57	50	20 DKN	2	DP	3.0	4	24000	192510 ●	192511 ●
Holz-Her 1832	58.7	50	16 DKN	3	DP	2.0	3	24000	192512 ●	192513 ●
Holz-Her 1832	58.7	50	16 DKN	3	DP	2.5	3	24000	192514 ●	192515 ●
Holz-Her 1832	58.7	50	16 DKN	3	DP	3.0	3	24000	192516 ●	192517 ●
Holz-Her 1833	72.5	61	20 DKN	4	DP	2.0	4	18000	192500 ●	192501 ●
Holz-Her 1833	72.5	61	20 DKN	4	DP	2.5	4	18000	192502 ●	192503 ●
Holz-Her 1833	72.5	61	20 DKN	4	DP	3.0	4	18000	192504 ●	192505 ●
Ott	69	61	16 DKN	3	DP	2.0	1	18000	192649 ●	192650 ●
Ott	69	61	16 DKN	4	DP	2.0	1	18000	192651 ●	192652 ●
Stefani	51.5	49.71	16 DKN	4	HW	1.0	8	18000	192657 ●	192658 ●
Stefani	51.5	49.71	16 DKN	4	HW	1.5	8	18000	192659 ●	192660 ●
Stefani	51.5	49.71	16 DKN	4	HW	2.0	8	18000	192661 ●	192662 ●
Stefani	70	60	16 DKN	4	DP	1.0	6	18000	192524 ●	192525 ●
Stefani	70	60	16 DKN	4	DP	2.0	6	18000	192526 ●	192527 ●
Stefani	70	60	16 DKN	4	DP	3.0	6	18000	192528 ●	192529 ●
Törk Makine	46	39	16	4	DP	2.0	3	18000	192643 ●	192644 ●

2. Panel processing

2.1 Edge processing 2.1.7 Edge finishing tools



Profile cutter

Application:

To round (profile) edgebandings on FK aggregate.

Machine:

Single or double-sided edgebanding machines.

Workpiece material:

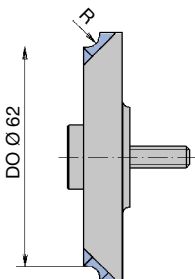
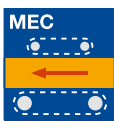
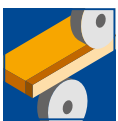
Plastic, softwood, hardwood and veneer edgebander.

Technical information:

DP tipped tools with HSK 32 adaptor for FK-aggregates. High concentricity.

D_0 = constant reference diameter.

DP tools - 3 mm tip height.



Type 1

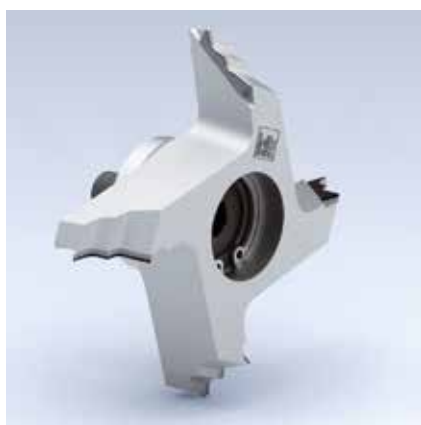
Various radii - Diamaster PRO, FK aggregate, HSK 32

WF 501 2 DP

Machine	D_0 mm	BO mm	Z	QAL	R mm	Type	n_{max} min^{-1}	ID LH	ID RH
Homag	62	HSK 32	4	DP	1.0	1	18000	091500 □	091501 □
Homag	62	HSK 32	4	DP	1.5	1	18000	091502 □	091503 □
Homag	62	HSK 32	4	DP	2.0	1	18000	091504 □	091505 □
Homag	62	HSK 32	4	DP	2.5	1	18000	091506 □	091507 □
Homag	62	HSK 32	4	DP	3.0	1	18000	091508 □	091509 □
Homag	62	HSK 32	6	DP	1.0	1	18000	091672	091673
Homag	62	HSK 32	6	DP	1.5	1	18000	091674	091675
Homag	62	HSK 32	6	DP	2.0	1	18000	091650	091651
Homag	62	HSK 32	6	DP	2.5	1	18000	091676	091677
Homag	62	HSK 32	6	DP	3.0	1	18000	091652	091653

2. Panel processing

2.1 Edge processing 2.1.7 Edge finishing tools



Profile cutter

Application:

For a choice of radii or bevels on edgebandings.

Machine:

Single or double-sided edgebanding machines.

Workpiece material:

Plastic, softwood, hardwood and veneer edgebander.

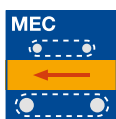
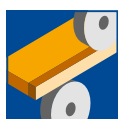
Technical information:

DP tipped tools with cylindrical bore or HSK 25 R adaptor.

Profiling with e.g. radii 2.0 and 3.0 mm and bevel 20°.

D₀ = constant reference diameter.

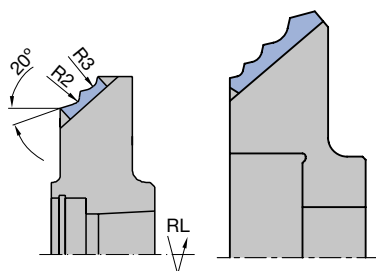
DP tools - 0.5 mm resharpening area.



Multi-profile cutter - Diamaster PRO

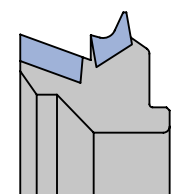
WF 501 2, WF 501 2 DP, WF 501 2 DP , WF 502 2 DP, WF 502 2 DP

Machine	D	D ₀	BO	Type	Z	R	FAW	n _{max}	ID	ID
	mm	mm	mm			mm	°	min ⁻¹	LH	RH
Biesse	75.4	60	16 DKN	2	6	1/2/3	25°	18000	091996 ●	091995 ●
Brandt	78	57.3	16 DKN	2	4	1.2/2/3	15°	18000	091967 ●	091968 ●
Holz-Her	58	50	20 DKN	3	2	2		18000	192530 ●	192531 ●
1826										
Holz-Her	58	50	20 DKN	3	2	2.5		18000	192532 ●	192533 ●
1826										
Holz-Her	58	50	20 DKN	3	2	3		18000	192534 ●	192535 ●
1826										
Holz-Her	71	68	16 DKN	6	4	3/2/1.3	45°	18000	192673 ●	192674 ●
FR 701										
Holz-Her	71	68	16 DKN	6	4	2/2/1.3	45°	18000	192675 ●	192676 ●
FR 701										
Holz-Her	71	68	16 DKN	6	4	2/1.3/1.3	45°	18000	192677 ●	192678 ●
FR 701										
Holz-Her	71	68	16 DKN	6	4	3/2/1.3	10°	18000	192679 ●	192680 ●
FR 701										
Holz-Her	71	68	16 DKN	6	4	1.3/1/0.8	45°	18000	192681 ●	192682 ●
FR 701										
Homag	74.33	62.99	16 DKN	5	4	1/2		18000	192683 ●	192684 ●
Homag	74.66	65.69	16 DKN	5	4	1.3/2		18000	192685 ●	192686 ●
Homag	85	65.2	HSK 25 R 1	4	2/3		20°	18000	091798 ●	091799 ●
IMA	85	65.2	HSK 25 R 1	4	2/3		20°	18000	091798 ●	091799 ●
Stefani	74.5	63.88	HSK 25 R 4	4	1/1.5/2		20°	18000	192655 ●	192656 ●
Stefani	74.5	63.88	HSK 25 R 1	4	1/1.5/2		20°	18000	192653 ●	192654 ●

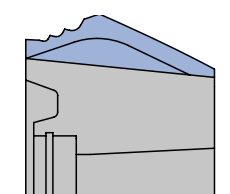


Type 1

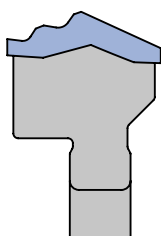
Type 2



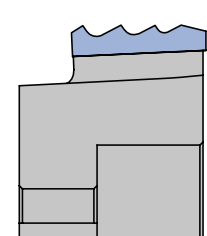
Type 3



Type 4



Type 5



Type 6

Alternative multi-profile trimming heads with different dimensions can be supplied at short notice on request.

2. Panel processing

2.1 Edge processing 2.1.7 Edge finishing tools



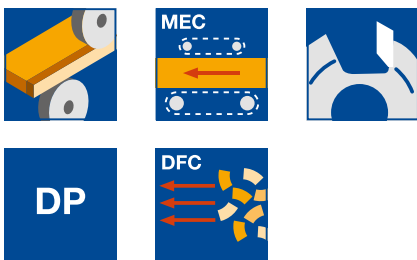
Profile cutter *iQsystem*

Application:
To round edgebandings.

Machine:
Single or double-sided edgebanding machines. Machines combined with special extraction hood i-System for efficient chip clearance.

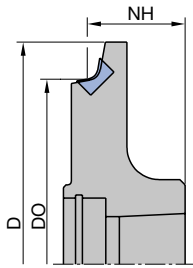
Workpiece material:
Plastic, softwood, hardwood and veneer edgebander.

Technical information:
DP tipped tools with HSK 25 R adaptor and special extraction hoods i-System for efficient chip clearance (approx. 97%) with reduced extraction energy consumption. Clean workpieces, no interference with scanning aggregates and less rework. Maximum concentricity. Constant reference diameter. DP tools - 3 mm tip height.

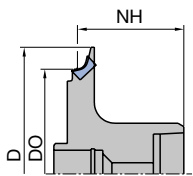


Various radii *iQsystem* - Diamaster PRO, HSK 25 R WF 501 2 DP

Machine	D	D ₀	NH	BO	Z	QAL	R	n _{max}	ID	ID
	mm	mm	mm	mm			mm	min ⁻¹	LH	RH
Homag, IMA 76	70	70	17.5	HSK 25 R	4	DP	1.0	18000	198494 ●	198484 ●
Homag, IMA 76	70	70	17.5	HSK 25 R	4	DP	1.5	18000	198495 ●	198485 ●
Homag, IMA 76	70	70	18.5	HSK 25 R	4	DP	2.0	18000	198496 ●	198486 ●
Homag, IMA 78	70	70	19	HSK 25 R	4	DP	2.5	18000	198497 ●	198487 ●
Homag, IMA 78	70	70	19.5	HSK 25 R	4	DP	3.0	18000	198498 ●	198488 ●
Homag, IMA 76	70	70	17.5	HSK 25 R	6	DP	1.0	18000	198499 ●	198489 ●
Homag, IMA 76	70	70	17.5	HSK 25 R	6	DP	1.5	18000	198500 ●	198490 ●
Homag, IMA 76	70	70	18.5	HSK 25 R	6	DP	2.0	18000	198501 ●	198491 ●
Homag, IMA 78	70	70	19	HSK 25 R	6	DP	2.5	18000	198502 ●	198492 ●
Homag, IMA 78	70	70	19.5	HSK 25 R	6	DP	3.0	18000	198503 ●	198493 ●



Radius cutter with HSK 25 R adaptor



Radius cutter with HSK 32 R adaptor for FK aggregates

Application:
To round (profile) edgebandings on FK aggregate.

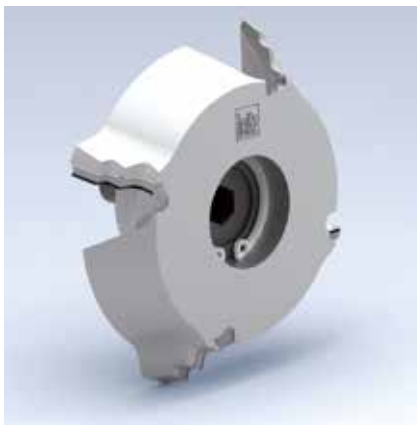
Technical information:
DP tipped tools with HSK 32 adaptor for FK aggregates with special extraction hoods i-System for highly efficient chip clearance (approx. 97%) with reduced extraction energy consumption. Clean workpieces, no interference with scanning aggregates and less rework. Maximum concentricity. Constant reference diameter. DP tools - 3 mm tip height.

Various radii *iQsystem* - Diamaster PRO, FK aggregate, HSK 32 WF 501 2 DP

Machine	D	D ₀	NH	BO	Z	QAL	R	n _{max}	ID	ID
	mm	mm	mm	mm			mm	min ⁻¹	LH	RH
Homag	75	62	31.5	HSK 32	4	DP	1.0	18000	198212 ●	198213 ●
Homag	75	62	31.5	HSK 32	4	DP	1.5	18000	198214 ●	198215 ●
Homag	75	62	31.5	HSK 32	4	DP	2.0	18000	198216 ●	198217 ●
Homag	75	62	31.5	HSK 32	4	DP	2.5	18000	198220 ●	198221 ●
Homag	75	62	31.5	HSK 32	4	DP	3.0	18000	198222 ●	198223 ●
Homag	75	62	31.5	HSK 32	6	DP	1.0	18000	198246 ●	198247 ●
Homag	75	62	31.5	HSK 32	6	DP	1.5	18000	198244 ●	198245 ●
Homag	75	62	31.5	HSK 32	6	DP	2.0	18000	198218 ●	198219 ●
Homag	75	62	31.5	HSK 32	6	DP	2.5	18000	198238 ●	198239 ●
Homag	75	62	31.5	HSK 32	6	DP	3.0	18000	198224 ●	198225 ●

2. Panel processing

2.1 Edge processing 2.1.7 Edge finishing tools



Profile cutter *iQsystem*

Application:

For a choice of radii or bevels on edgebandings.

Machine:

Single or double-sided edgebanding machines. Machines combined with special extraction hood i-System for efficient chip clearance.

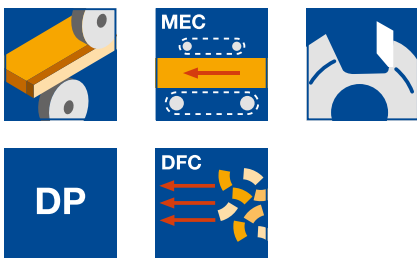
Workpiece material:

Plastic, softwood, hardwood and veneer edgebander.

Technical information:

DP tipped tools with HSK 25 R adaptor and special extraction hood i-System for efficient chip clearance (approx. 97%) with reduced extraction energy consumption. Clean workpieces, no interference with scanning aggregates and less rework. Profile combination of routing with e.g. radii of 2.0 and 3.0 mm and bevel 20°. High concentricity.

DP tools - 3 mm tip height.

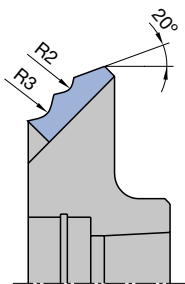


Multi-profile cutter *iQsystem* - Diamaster PRO, HSK 25 R

WF 501 2 DP

Machine	D	D ₀	BO	Z	QAL	R	FAW	ID	ID
	mm	mm	mm			mm	°	LH	RH
Homag, IMA	85	62	HSK 25 R	4	DP	2/3	20°	198444 ●	198445 ●
Homag, IMA	85	62	HSK 25 R	4	DP	1.5/2	20°	198504 ●	198505 ●
Homag, IMA	85	62	HSK 25 R	6	DP	2/3	20°	198456 ●	198457 ●

Alternative multi-profile trimming heads with different dimensions can be supplied at short notice on request.



Multi-profile cutter i-System

2. Panel processing

2.1 Edge processing 2.1.7 Edge finishing tools



Profile cutter *iQsystem*

Application:

For a choice of radii and bevels on edgebandings. Corner rounding on leading and trailing edges and radius/bevel on top/bottom edges.

Machine:

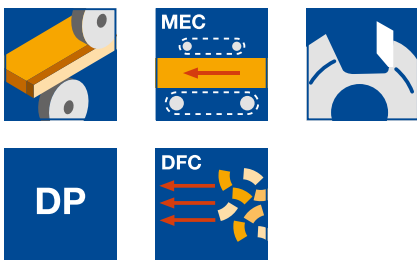
IMA edgebanding machine with KFA aggregates.

Workpiece material:

Plastic, softwood, hardwood and veneer edgebander.

Technical information:

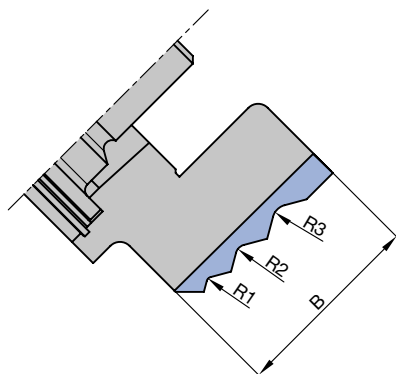
DP tipped tools with HSK 25 R adaptor and special extraction hood i-System for highly efficient chip collection (approx. 97%) with reduced extraction energy consumption. Clean workpieces, no interference with scanning aggregates and less rework. 3 mm tip height. Constant diameters. Low noise.



**Multi-profile cutter *iQsystem* - Diamaster PRO, HSK 25 R, KFA aggregate
WF 502 2 DP**

Machine	D mm	B mm	BO mm	Z	R	FAW °	ID LH	ID RH
IMA Multiprofiler	75	30	HSK 25 R	6	1/2/3	15°	091916 ●	091917 ●
IMA Multiprofiler	75	30	HSK 25 R	6	1/1.5/2	20°	091922 ●	091923 ●
IMA Multiprofiler KFA	75	28	HSK 25 R	6	1/2/3	15°	091912 ●	091913 ●
IMA Multiprofiler KFA	75	28	HSK 25 R	6	1/1.5/2	20°	091924 ●	091925 ●
IMA Multiprofiler KFA	75	28	HSK 25 R	6	1/2/3	45°	091926 ●	091927 ●

Alternative multi-profile trimming heads with different dimensions can be supplied at short notice on request.



2. Panel processing

2.1 Edge processing

2.1.7 Edge finishing tools



Profile cutter *IQsystem*

Application:

To round (profile trim) edgebandings on FK31 aggregates.

Machine:

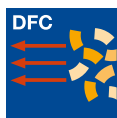
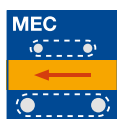
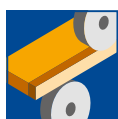
Homag edgebanding machines with profile FK31 trimming aggregate.

Workpiece material:

Plastic, softwood, hardwood and veneer edgebander.

Technical information:

DP tipped tools with bore for mounting as set on the tool adaptor. DFC design for highly efficient chip clearance of more than 97%. D_0 = constant reference diameter. Low noise DP tool - 3 mm tip height. Maximum concentricity.



Diamaster PRO, FK31 aggregate - Tool 1 fixed

WF 501 2 DP

Machine	Tool no.	D mm	D_0 mm	BO mm	Z	QAL	R mm	n_{max} min ⁻¹	ID LH	ID RH
Homag	1	88	80.1	46	4	DP	1.5	18000	192558 ●	192559 ●
Homag	1	88	80.1	46	4	DP	2.0	18000	192556 ●	192557 ●
Homag	1	88	80.1	46	4	DP	2.2	18000	192580 ●	192581 ●
Homag	1	88	80.1	46	4	DP	2.5	18000	192554 ●	192555 ●
Homag	1	88	80.1	46	4	DP	3.0	18000	192552 ●	192553 ●

Diamaster PRO, FK31 aggregate - Tool 2 moveable

WF 501 2 DP

Machine	Tool no.	D mm	D_0 mm	BO mm	Z	QAL	R mm	FAW °	n_{max} min ⁻¹	ID LH	ID RH
Homag	2	87	80.1	55	4	DP	1.0		18000	192568 ●	192569 ●
Homag	2	87	80.1	55	4	DP	1.5		18000	192566 ●	192567 ●
Homag	2	87	80.1	55	4	DP	1.7		18000	192582 ●	192583 ●
Homag	2	87	80.1	55	4	DP	2.0		18000	192564 ●	192565 ●
Homag	2	87	80.1	55	4	DP	2.5		18000	192562 ●	192563 ●
Homag	2	87	80.1	55	4	DP	3.0		18000	192560 ●	192561 ●
Homag	2	87	80.1	55	4	DP		45°	18000	192112 ●	192113 ●
Homag	2	87	80.1	55	4	DP		30°	18000	192123 ●	192124 ●
Homag	2	87	80.1	55	4	DP		20°	18000	192114 ●	192115 ●

Diamaster PRO, FK31 aggregate - Tool 3 moveable

WF 300 2 DP, WF 501 2 DP

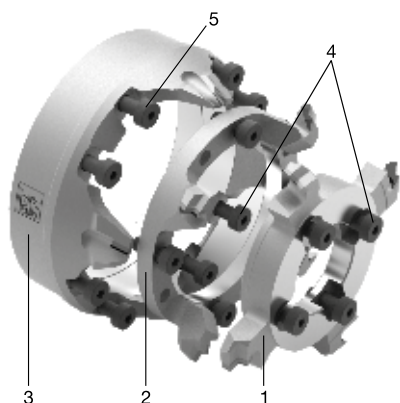
Machine	Tool no.	D mm	D_0 mm	BO mm	Z	QAL	R mm	FAW °	n_{max} min ⁻¹	ID LH	ID RH
Homag	3	92	80.1	73	4	DP	1.0		18000	192574 ●	192575 ●
Homag	3	92	80.1	73	4	DP	1.5		18000	192572 ●	192573 ●
Homag	3	92	80.1	73	4	DP	1.7		18000	192584 ●	192585 ●
Homag	3	92	80.1	73	4	DP	2.0		18000	192570 ●	192571 ●
Homag	3	92	80.1	73	4	DP		15°	18000	091520 ●	091521 ●
FK 31 PowerTrim											
Homag	3	92	80.1	73	4	DP		20°	18000	192118 ●	192119 ●
Homag	3	92	80.1	73	4	DP		30°	18000	192125 ●	192126 ●
Homag	3	92	80.1	73	4	DP		45°	18000	192116 ●	192117 ●

Differing radii available at short notice from a tool bank. Tool 1 radius must be greater than tool 2 and 3. The larger radius defines the maximal bevel size of the moveable bevel tools 2 and 3.

Spare parts:

Part-no.	BEZ	ABM mm	ID
4	Cylindrical screw with ISK	M5x12	114046 ●
5	Cylindrical screw with ISK	M5x30	114045 ●
	Allen key	SW 3	005444 ●

Tools supplied with mounting screws.





Profile cutter Multi-Edge

Application:

For multi-profile cutting with radii and bevelling of edges.

Machine:

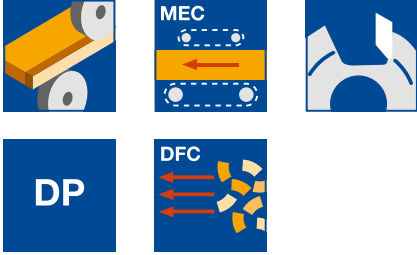
Stefani.

Workpiece material:

Plastic, softwood, hardwood and veneer edgebander.

Technical information:

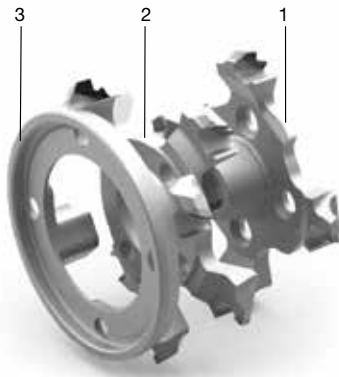
DP composite tool with bore holes for setwise assembling on machine side adaptor. DFC design for efficient chip collection. Maximum processing quality through high running accuracy and quiet running. D_0 = constant reference diameter, RPM $n_{max} = 18,000 \text{ min}^{-1}$.



Diamaster PRO - Tool 1 fixed

WF 501 2 16

Machine	D	D_0	BO	Z	QAL	R	n_{max}	ID	ID
	mm	mm	mm			mm	min^{-1}	LH	RH
Stefani	68	61.7	10 DKN	4	DP	1.0	18000	192606 ●	192605 ●
Stefani	68	61.7	10 DKN	4	DP	1.3	18000	192608 ●	192607 ●
Stefani	68	61.7	10 DKN	4	DP	1.5	18000	192610 ●	192609 ●
Stefani	68	61.7	10 DKN	4	DP	2.0	18000	192612 ●	192611 ●
Stefani	68	61.7	10 DKN	4	DP	2.5	18000	192614 ●	192613 ●
Stefani	68	61.7	10 DKN	4	DP	3.0	18000	192616 ●	192615 ●



- 1 = Tool 1
- 2 = Tool 2
- 3 = Tool 3

Diamaster PRO - Tool 2 movable

WF 501 2 16

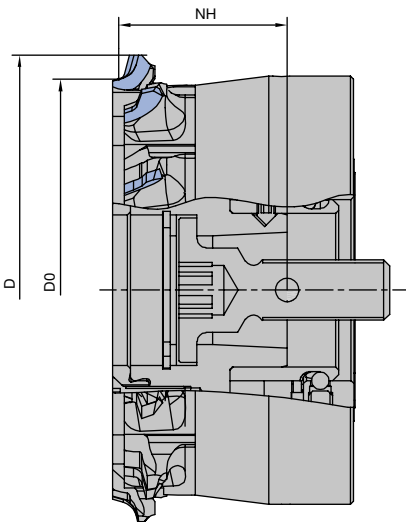
Machine	D	D_0	BO	Z	QAL	R	n_{max}	ID	ID
	mm	mm	mm			mm	min^{-1}	LH	RH
Stefani	68	61.7	23	4	DP	1.0	18000	192618 ●	192617 ●
Stefani	68	61.7	23	4	DP	1.3	18000	192620 ●	192619 ●
Stefani	68	61.7	23	4	DP	1.5	18000	192622 ●	192621 ●
Stefani	68	61.7	23	4	DP	2.0	18000	192624 ●	192623 ●
Stefani	68	61.7	23	4	DP	2.5	18000	192626 ●	192625 ●
Stefani	68	61.7	23	4	DP	3.0	18000	192628 ●	192627 ●

Diamaster PRO - Tool 3 movable

WF 501 2 16

Machine	D	D_0	BO	Z	QAL	R	n_{max}	ID	ID
	mm	mm	mm			mm	min^{-1}	LH	RH
Stefani	68	61.7	38	4	DP	1.0	18000	192672 ●	192671 ●
Stefani	68	61.7	38	4	DP	1.3	18000	192632 ●	192631 ●
Stefani	68	61.7	38	4	DP	1.5	18000	192634 ●	192633 ●
Stefani	68	61.7	38	4	DP	2.0	18000	192636 ●	192635 ●
Stefani	68	61.7	38	4	DP	2.5	18000	192638 ●	192637 ●
Stefani	68	61.7	38	4	DP	3.0	18000	192640 ●	192639 ●

Further profile variants in various dimensions available on request at short notice.



Diamaster PRO - single tools

WF 501 2 17

Tool no.	D	D_0	BO	Z	QAL	R	ID	ID
	mm	mm	mm			mm	LH	RH
1	78	70	30	4	DP	2	194403 ●	194411 ●
2	78	70	45	4	DP	1.3	194417 ●	194425 ●
2	78	70	45	4	DP	1.5	194418 ●	194426 ●
3	78	70	40	4	DP	1	194432 ●	194440 ●

It is recommended to change single tools only in the course of a service by Homag or by the Leitz tool service. Single tools are delivered with appropriate compression springs and screws.

Spare parts:

Part-no.	BEZ	ABM	ID
		mm	
4	Multi-profile cutter aggregate	D71x37.2xHSK25R	194350 ●

2. Panel processing

2.1 Edge processing

2.1.7 Edge finishing tools



Profile cutter *iQsystem*

Application:

For a choice of radii and bevels on edgebandings. Corner rounding on leading and trailing edges and radius/bevel on top/bottom edges.

Machine:

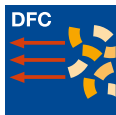
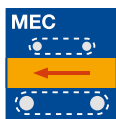
IMA edgebanding machines with MFA aggregates.

Workpiece material:

Plastic, softwood, hardwood and veneer edgebander.

Technical information:

DP tipped tools with HSK 25 R adaptor and special extraction hood i-System for highly efficient chip collection (approx. 97%) with reduced extraction energy consumption. Clean workpieces, no interference with scanning aggregates and less rework. 3 mm tip height. Constant diameters. Low noise.



Multi-profile cutter *iQsystem* - Diamaster PRO, HSK 25 R, MFA aggregates

WF 502 2 DP

Machine	D	D ₀	BO	Z	R	FAW	ID	ID
	mm	mm	mm		mm	°	LH	RH
IMA	89	62	HSK 25 R	6	1/2	15°	091918	091919
IMA	89	57	HSK 25 R	6	1/2/3	15°	091920	091921

Alternative multi-profile trimming heads with different dimensions can be supplied at short notice on request.



Profile cutter / bevel cutter for stationary machines.

Application:

To round/bevel edgebandings.

Machine:

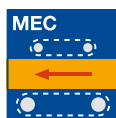
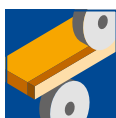
IMA (BIMA).

Workpiece material:

Plastic, softwood, hardwood and veneer edgebander.

Technical information:

HW tipped profile/bevel cutter, 1 or 2 part design. DP tipped tools available at short notice.



Various radii / bevels - IMA

WF 501 2

D	D ₀	SB	BO	Z	QAL	R	FAW	Type	n _{max}	ID	ID
mm	mm	mm	mm			mm	°		min ⁻¹	LH	RH
64.4	55	10.2	30	6	HW	1.5		1	18000	074062	074063
64.4	55	10.2	30	6	HW	2.0		1	18000	074064	074065
64.4	55	10.2	30	6	HW	3.0		1	18000	074066	074067
70	60	9	30	6	HW	1.5		1	18000	074056	074057
70	60	9	30	6	HW	2.0		1	18000	074058	074059
70	60	9	30	6	HW	3.0		1	18000	074060	074061
70	60	9	30	6	HW		15°	1	18000	074068	074069
70	60	9	30	6	HW		30°	1	18000	074070	074071
70	60	9	30	6	HW		45°	1	18000	074072	074073

All cutters are available at short notice in 2 part design.

Архангельск (8182)63-90-72
Астана (7172)727-132
Астрахань (8512)99-46-04
Барнаул (3852)73-04-60
Белгород (4722)40-23-64
Брянск (4832)59-03-52
Владивосток (423)249-28-31
Волгоград (844)278-03-48
Вологда (8172)26-41-59
Воронеж (473)204-51-73
Екатеринбург (343)384-55-89
Иваново (4932)77-34-06

Ижевск (3412)26-03-58
Иркутск (395)279-98-46
Казань (843)206-01-48
Калининград (4012)72-03-81
Калуга (4842)92-23-67
Кемерово (3842)65-04-62
Киров (8332)68-02-04
Краснодар (861)203-40-90
Красноярск (391)204-63-61
Курск (4712)77-13-04
Липецк (4742)52-20-81
Киргизия (996)312-96-26-47

Магнитогорск (3519)55-03-13
Москва (495)268-04-70
Мурманск (8152)59-64-93
Набережные Челны (8552)20-53-41
Нижний Новгород (831)429-08-12
Новокузнецк (3843)20-46-81
Новосибирск (383)227-86-73
Омск (3812)21-46-40
Орел (4862)44-53-42
Оренбург (3532)37-68-04
Пенза (8412)22-31-16
Россия (495)268-04-70

Пермь (342)205-81-47
Ростов-на-Дону (863)308-18-15
Рязань (4912)46-61-64
Самара (846)206-03-16
Санкт-Петербург (812)309-46-40
Саратов (845)249-38-78
Севастополь (8692)22-31-93
Симферополь (3652)67-13-56
Смоленск (4812)29-41-54
Сочи (862)225-72-31
Ставрополь (8652)20-65-13
Казахстан (772)734-952-31

Сургут (3462)77-98-35
Тверь (4822)63-31-35
Томск (3822)98-41-53
Тула (4872)74-02-29
Тюмень (3452)66-21-18
Ульяновск (8422)24-23-59
Уфа (347)229-48-12
Хабаровск (4212)92-98-04
Челябинск (351)202-03-61
Череповец (8202)49-02-64
Ярославль (4852)69-52-93