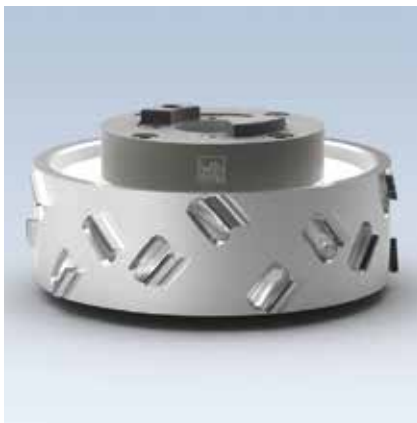


## 2. Panel processing

### 2.1 Edge processing

#### 2.1.2 Jointing cutters



#### Jointing / milling cutter on hydro sleeve

##### Application:

For tear-free and low noise jointing of workpiece edges side with and against feed (jump cutting).

##### Machine:

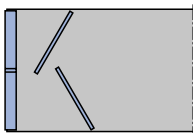
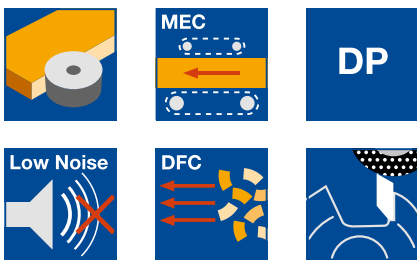
Edgebanding machines with zero joint technology.

##### Workpiece material:

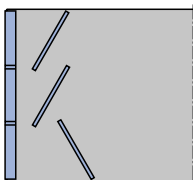
Chip and fibre board (MDF etc.) uncoated, veneered, plastic and paper coated, fibre reinforced plastics (GFRP, CFRP etc.).

##### Technical information:

Increase of the processing quality through zero clearance hydro adaptor. Tool with alternate shear angle for tear-free jointing edge and straight cutting surface. Low noise design with noise reduction up to 5 dB(A) and highly efficient chip collection (>95%). Tool with knife arrangement S produces hollow cut for tightly closing edgebanding.



Type S = symmetric knife arrangement



Type AS = asymmetric tip arrangement

##### Diamaster PRO mounted on hydro sleeve

HF 230 2, HF 230 2 DP

Machine	D mm	SB mm	BO mm	n <sub>max</sub> min <sup>-1</sup>	Z	Type	ID	
							LH	RH
Homag	125	43	30	13600	5x4	S	192133	192134
Homag	125	63	30	13600	5x6	S	192135	192136
Homag	150	43	30	13600	5x4	S	192205	192206
Homag	150	63	30	13600	5x6	S	192207	192208

##### Diamaster WhisperCut EdgeExpert mounted on hydro sleeve

HM 230 2 01

Machine	D mm	SB mm	BO mm	n <sub>max</sub> min <sup>-1</sup>	Z	Type	ID	
							LH	RH
IMA	125	43	30	13700	4x6	AS	192259	192258
IMA	125	63	30	13700	4x8	AS	192261	192260
IMA	150	43	30	13700	4x6	AS	192263	192262
IMA	150	63	30	13700	4x8	AS	192265	192264

##### Spare parts:

BEZ	ABM mm	ID
Securing part	for HF-spindle HF 30	066563 ●
Allen Key	SW 5, L 150	005501 ●

Архангельск (8182)63-90-72  
Астана (7172)727-132  
Астрахань (8512)99-46-04  
Барнаул (3852)73-04-60  
Белгород (4722)40-23-64  
Брянск (4832)59-03-52  
Владивосток (423)249-28-31  
Волгоград (844)278-03-48  
Вологда (8172)26-41-59  
Воронеж (473)204-51-73  
Екатеринбург (343)384-55-89  
Иваново (4932)77-34-06

Ижевск (3412)26-03-58  
Иркутск (395)279-98-46  
Казань (843)206-01-48  
Калининград (4012)72-03-81  
Калуга (4842)92-23-67  
Кемерово (3842)65-04-62  
Киров (8332)68-02-04  
Краснодар (861)203-40-90  
Красноярск (391)204-63-61  
Курск (4712)77-13-04  
Липецк (4742)52-20-81  
Киргизия (996)312-96-26-47

Магнитогорск (3519)55-03-13  
Москва (495)268-04-70  
Мурманск (8152)59-64-93  
Набережные Челны (8552)20-53-41  
Нижний Новгород (831)429-08-12  
Новокузнецк (3843)20-46-81  
Новосибирск (383)227-86-73  
Омск (3812)21-46-40  
Орел (4862)44-53-42  
Оренбург (3532)37-68-04  
Пенза (8412)22-31-16  
Россия (495)268-04-70

Пермь (342)205-81-47  
Ростов-на-Дону (863)308-18-15  
Рязань (4912)46-61-64  
Самара (846)206-03-16  
Санкт-Петербург (812)309-46-40  
Саратов (845)249-38-78  
Севастополь (8692)22-31-93  
Симферополь (3652)67-13-56  
Смоленск (4812)29-41-54  
Сочи (862)225-72-31  
Ставрополь (8652)20-65-13  
Казахстан (772)734-952-31

Сургут (3462)77-98-35  
Тверь (4822)63-31-35  
Томск (3822)98-41-53  
Тула (4872)74-02-29  
Тюмень (3452)66-21-18  
Ульяновск (8422)24-23-59  
Уфа (347)229-48-12  
Хабаровск (4212)92-98-04  
Челябинск (351)202-03-61  
Череповец (8202)49-02-64  
Ярославль (4852)69-52-93