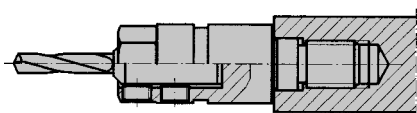


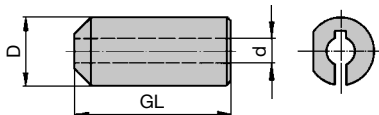
6. Drilling

6.4 Multi-purpose drilling

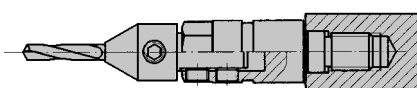
6.4.1 Twist drills



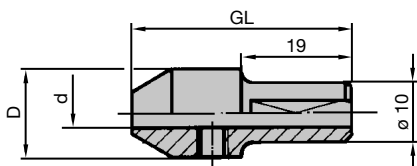
Drill bit clamping using the reducing sleeve TB 110 0 to use the full drill working length



Reducing sleeve with short clamping length



Drill bit clamping with increased stability using reducing sleeve PM 320 0 25



Reducing sleeve with increased clamping length

Application:

For clamping of twist drills WB 101 0 04. This enables the complete utilization of the drill working length.

Technical information:

Adaptor can be used in drilling spindles or adjustable drill chucks with side clamping screw. Not suitable for use in most quick-change drill adaptors such as PM 320 0 55/56/57/58/59.

Reducing sleeves with short clamping length

TB 110 0

D	d	GL	ID
mm	mm	mm	
10	2	23	034520 ●
10	2.5	23	034521 ●
10	3	23	034522 ●
10	3.18 / 3.2	23	034525 ●
10	3.5	23	034523 ●
10	4	23	034524 ●
10	5	23	034526 ●

Application:

For clamping of twist drills WB 101 0 04 with reduced risk of breaking of the clamped drill by reducing the length of the unsupported drill.

Technical information:

Adaptor with shank 10 mm and clamping area. Usable in drilling spindles or drill chucks with side clamping screw. By mounting the length adjustment screw ID 009157 in the shank of the reducing sleeve, easy clamping in the quick-change drill chuck PM 320 0 55/56/57/58/59 is possible.

Reducing sleeves with increased clamping length

PM 320 0 25

D	d	GL	S	ID
mm	mm	mm	mm	
15	2	38	10x19	034490 ●
15	2.5	38	10x19	034491 ●
15	3	38	10x19	034492 ●
15	3.18 / 3.2	38	10x19	034495 ●
15	3.5	38	10x19	034493 ●
15	4	38	10x19	034494 ●
15	5	38	10x19	034496 ●

Spare parts:

BEZ	ABM	BEM	ID
	mm		
Allen key	SW 3		005433 ●
Allen screw	M6x5		005836 ●
Length adjustment screw Torx® 20	M5x17	for quick-change drill adaptors	009157 ●

Архангельск (8182)63-90-72
Астана (7172)727-132
Астрахань (8512)99-46-04
Барнаул (3852)73-04-60
Белгород (4722)40-23-64
Брянск (4832)59-03-52
Владивосток (423)249-28-31
Волгоград (844)278-03-48
Вологда (8172)26-41-59
Воронеж (473)204-51-73
Екатеринбург (343)384-55-89
Иваново (4932)77-34-06

Ижевск (3412)26-03-58
Иркутск (395)279-98-46
Казань (843)206-01-48
Калининград (4012)72-03-81
Калуга (4842)92-23-67
Кемерово (3842)65-04-62
Киров (8332)68-02-04
Краснодар (861)203-40-90
Красноярск (391)204-63-61
Курск (4712)77-13-04
Липецк (4742)52-20-81
Киргизия (996)312-96-26-47

Магнитогорск (3519)55-03-13
Москва (495)268-04-70
Мурманск (8152)59-64-93
Набережные Челны (8552)20-53-41
Нижний Новгород (831)429-08-12
Новокузнецк (3843)20-46-81
Новосибирск (383)227-86-73
Омск (3812)21-46-40
Орел (4862)44-53-42
Оренбург (3532)37-68-04
Пенза (8412)22-31-16
Россия (495)268-04-70

Пермь (342)205-81-47
Ростов-на-Дону (863)308-18-15
Рязань (4912)46-61-64
Самара (846)206-03-16
Санкт-Петербург (812)309-46-40
Саратов (845)249-38-78
Севастополь (8692)22-31-93
Симферополь (3652)67-13-56
Смоленск (4812)29-41-54
Сочи (862)225-72-31
Ставрополь (8652)20-65-13
Казахстан (772)734-952-31

Сургут (3462)77-98-35
Тверь (4822)63-31-35
Томск (3822)98-41-53
Тула (4872)74-02-29
Тюмень (3452)66-21-18
Ульяновск (8422)24-23-59
Уфа (347)229-48-12
Хабаровск (4212)92-98-04
Челябинск (351)202-03-61
Череповец (8202)49-02-64
Ярославль (4852)69-52-93