

Shrink-fit collet TER, TB 120 0 01

Note:

Corresponding accessories for shrink-fit units are required in order to use shrink-fit collets TER - ER together with the shrink-fit units ISG 22xx / 32xx or 24xx / 34xx.

See: Brochure ThermoGrip® shrink-fit generator.

Shrink collet ThermoGrip®, Type TER, DIN ISO 15488**Application:**

High precision tool chuck for clamping shank tools by thermal shrinking. Has the highest stability and rigidity of all known shank tools clamping systems, suitable for HSC and HPC machining.

Technical information:

Replacement for conventional spring collets to increase concentricity, rigidity and speed strength. Universal design for the adaptation of shank tools in machining aggregates as well as direct clamping in spindles with integrated collet adaptor. For clamping of carbide and steel shanks. Clamping eccentricity $e \leq 0.01$ mm.

Attention: In order to mount the collet nut in the shrunk tool, the tool diameter is not allowed to be larger than the collar diameter (DB) stated in the table. In individual cases the existing clamping nut must be exchanged with the version stated in the table.

TER - ER16, DIN ISO 15488, 8°

TB 120 0 01

BEZ	d	D	DB	L	ID
	mm	mm	mm	mm	
Shrink collet	3	17	12.5	27	679500 □
Shrink collet	4	17	12.5	27	679501 □
Shrink collet	6	17	12.5	27	679502 □
Shrink collet	8	17	12.5	27	679503 □

Spare parts:

BEZ	ABM	D	ID
	mm	mm	
Collet chuck nut	M22x1.5	28	006657 □

TER - ER20, DIN ISO 15488, 8°

TB 120 0 01

BEZ	d	D	DB	L	ID
	mm	mm	mm	mm	
Shrink collet	6	21	15.5	31	679504 □
Shrink collet	8	21	15.5	31	679505 □
Shrink collet	10	21	15.5	31	679506 □

Spare parts:

BEZ	ABM	D	ID
	mm	mm	
Collet chuck nut	M25x1.5	34	006658 □

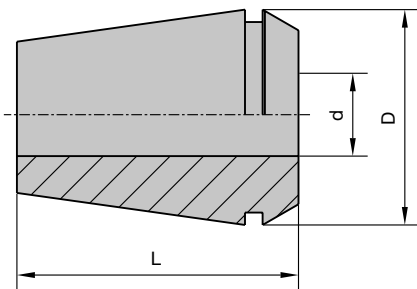
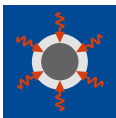
Архангельск (8182)63-90-72
Астана (7172)727-132
Астрахань (8512)99-46-04
Барнаул (3852)73-04-60
Белгород (4722)40-23-64
Брянск (4832)59-03-52
Владивосток (423)249-28-31
Волгоград (844)278-03-48
Вологда (8172)26-41-59
Воронеж (473)204-51-73
Екатеринбург (343)384-55-89
Иваново (4932)77-34-06

Ижевск (3412)26-03-58
Иркутск (395)279-98-46
Казань (843)206-01-48
Калининград (4012)72-03-81
Калуга (4842)92-23-67
Кемерово (3842)65-04-62
Киров (8332)68-02-04
Краснодар (861)203-40-90
Красноярск (391)204-63-61
Курск (4712)77-13-04
Липецк (4742)52-20-81
Киргизия (996)312-96-26-47

Магнитогорск (3519)55-03-13
Москва (495)268-04-70
Мурманск (8152)59-64-93
Набережные Челны (8552)20-53-41
Нижний Новгород (831)429-08-12
Новокузнецк (3843)20-46-81
Новосибирск (383)227-86-73
Омск (3812)21-46-40
Орел (4862)44-53-42
Оренбург (3532)37-68-04
Пенза (8412)22-31-16
Россия (495)268-04-70

Пермь (342)205-81-47
Ростов-на-Дону (863)308-18-15
Рязань (4912)46-61-64
Самара (846)206-03-16
Санкт-Петербург (812)309-46-40
Саратов (845)249-38-78
Севастополь (8692)22-31-93
Симферополь (3652)67-13-56
Смоленск (4812)29-41-54
Сочи (862)225-72-31
Ставрополь (8652)20-65-13
Казахстан (772)734-952-31

Сургут (3462)77-98-35
Тверь (4822)63-31-35
Томск (3822)98-41-53
Тула (4872)74-02-29
Тюмень (3452)66-21-18
Ульяновск (8422)24-23-59
Уфа (347)229-48-12
Хабаровск (4212)92-98-04
Челябинск (351)202-03-61
Череповец (8202)49-02-64
Ярославль (4852)69-52-93



Shrink-fit collet TER, TB 120 0 01

Note:

Corresponding accessories for shrink-fit units are required in order to use shrink-fit collets TER - ER together with the shrink-fit units ISG 22xx / 32xx or 24xx / 34xx.
See: Brochure ThermoGrip® shrink-fit generator.

Shrink collet ThermoGrip®, Type TER, DIN ISO 15488

Application:

High precision tool chuck for clamping shank tools by thermal shrinking. Has the highest stability and rigidity of all known shank tools clamping systems, suitable for HSC and HPC machining.

Technical information:

Replacement for conventional spring collets to increase concentricity, rigidity and speed strength. Universal design for the adaptation of shank tools in machining aggregates as well as direct clamping in spindles with integrated collet adaptor. For clamping of carbide and steel shanks. Clamping eccentricity $e \leq 0.01$ mm.

Attention: In order to mount the collet nut in the shrunk tool, the tool diameter is not allowed to be larger than the collar diameter (DB) stated in the table. In individual cases the existing clamping nut must be exchanged with the version stated in the table.

TER - ER25, DIN ISO 15488, 8°

TB 120 0 01

BEZ	d mm	D mm	DB mm	L mm	ID
Shrink collet	3	26	20	35	679507 □
Shrink collet	4	26	20	35	679508 □
Shrink collet	6	26	20	35	679509 □
Shrink collet	8	26	20	35	679510 □
Shrink collet	10	26	20	35	679511 □
Shrink collet	12	26	20	35	679512 □
Shrink collet	14	26	20	35	679513 □
Shrink collet	16	26	20	35	679514 □

Spare parts:

BEZ	ABM mm	D mm	ID
Collet chuck nut	M32x1.5	42	006659 □

TER - ER32, DIN ISO 15488, 8°

TB 120 0 01

BEZ	d mm	D mm	DB mm	L mm	ID
Shrink collet	6	33	26	40	679515 □
Shrink collet	8	33	26	40	679516 □
Shrink collet	10	33	26	40	679517 □
Shrink collet	12	33	26	40	679518 □
Shrink collet	14	33	26	40	679519 □
Shrink collet	16	33	26	40	679520 □
Shrink collet	18	33	26	40	679521 □
Shrink collet	20	33	26	40	679522 □

Spare parts:

BEZ	ABM mm	D mm	ID
Collet chuck nut	M40x1.5	50	006660 □

Without flange

TB 100 0 01

D mm	BO mm	L mm	ID
35	30	10	028290 ●
35	30	40	028293 ●
35	30	60	028294 ●
35	30	96	028295 ●
40	30	20	028296 ●
40	30	40	028298 ●
40	30	53	028300 ●
40	30	60	028301 ●
40	30	96	028302 ●
40	35	30	028304 ●
40	35	40	028305 ●
40	35	60	028306 ●
40	35	96	028307 ●
50	40	96	028310 ●

7. Clamping systems

7.1 Clamping elements

7.1.3 Clamping sleeves



Reducing sleeve

Application:

Reducing sleeve with/without flange for cutting tools and tool sets for use on spindles of various diameters.

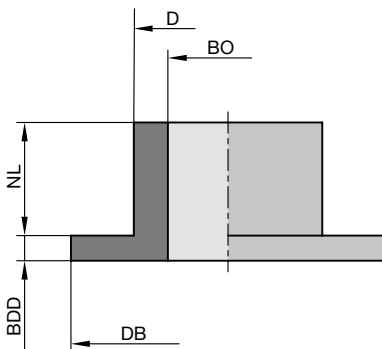
Machine:

Spindle moulders, plug cutters etc.

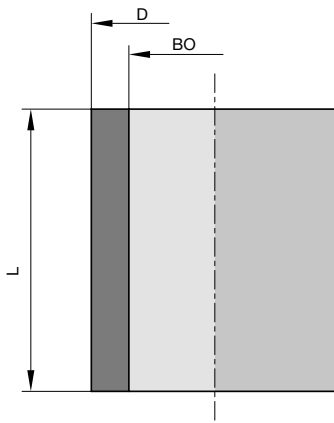
Technical information:

The length of the reducing sleeve should be approximately 2 mm shorter than the width of the hub or the total height of the tool/tool set.

For safety reasons, the use of reducing sleeves should be avoided if possible.



Reducing sleeve TB 200 0 with flange



Reducing sleeve TB 100 0 01 without flange

With flange

TB 200 0

D	BO	BO	DB	NL	BDD	ID
mm	mm	in	mm	mm	mm	
30	25		50	18	4	028201 ●
35	30		55	18	5	028204 ●
40	30		60	18	6	028206 ●
40	35		60	18	6	028207 ●
40	31.75	1 1/4"	60	18	6	028220 ●
50	30		70	18	6	028208 ●
50	35		70	18	6	028210 ●
50	40		70	18	6	028211 ●
50	45		70	18	6	028209 ●
60	30		80	18	6	028212 ●
60	40		80	18	6	028214 ●
60	50		80	18	6	028216 ●

Without flange

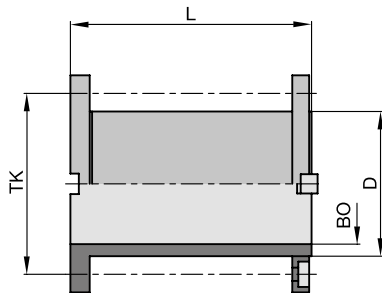
TB 100 0 01

D	BO	L	ID
mm	mm	mm	
35	30	10	028290 ●
35	30	40	028293 ●
35	30	60	028294 ●
35	30	96	028295 ●
40	30	20	028296 ●
40	30	40	028298 ●
40	30	53	028300 ●
40	30	60	028301 ●
40	30	96	028302 ●
40	35	30	028304 ●
40	35	40	028305 ●
40	35	60	028306 ●
40	35	96	028307 ●
50	40	96	028310 ●

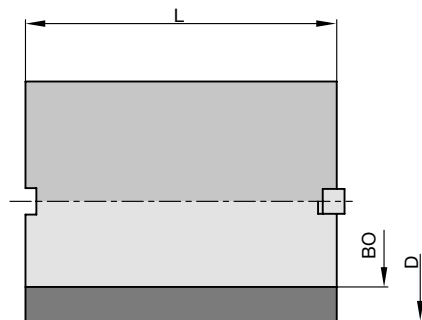
7. Clamping systems

7.1 Clamping elements

7.1.3 Clamping sleeves



Clamping sleeve TB 260 0 with end ring and safety device against twisting



Spacer with safety device against twisting

Clamping sleeve with end ring

Application:

Clamping sleeve for mounting sets of single tools.

Machine:

Spindle moulders, moulders, double end tenoners, edgbanding machines and window production machines.

Technical information:

Suitable for the use with several tool sets mounted on top of each other e.g. stacked spindle machines.

With end ring and safety device against twisting

TB 260 0

D	BO	TK	L	ID
mm	mm		mm	
50	40	65	112	029676 ●
60	40	75	112	029677 ●
60	40	75	100	029678 ●
60	50	75	100	029679 ●
60	50	75	95	029680 ●
60	50	75	80	029697 ●

Spare parts:

BEZ	for L	ABM	ID
	mm	mm	
Cylindrical screw with ISK	80	M6x74	007075 ●
Cylindrical screw with ISK	100	M6x94	007077 ●
Cylindrical screw with ISK	112	M6x106	007078 ●
Countersink screw, Torx® 15		M4x10-12.9	007437 ●
Feather key		B 8x7x16	008506 ●
Allen key		SW 5	005452 ●
Torx® key		Torx® 15	117507 ●

Application:

Spacer element for use with clamping sleeves with safety device against twisting to fill free spindle lengths.

Spindle filler spacers with safety device against twisting

TR 112 0

D	BO	KLH	ID
mm	mm	mm	
77	50	60	027875 ●
77	50	80	027876 ●
77	50	100	027878 ●

Архангельск (8182)63-90-72
Астана (7172)727-132
Астрахань (8512)99-46-04
Барнаул (3852)73-04-60
Белгород (4722)40-23-64
Брянск (4832)59-03-52
Владивосток (423)249-28-31
Волгоград (844)278-03-48
Вологда (8172)26-41-59
Воронеж (473)204-51-73
Екатеринбург (343)384-55-89
Иваново (4932)77-34-06

Ижевск (3412)26-03-58
Иркутск (395)279-98-46
Казань (843)206-01-48
Калининград (4012)72-03-81
Калуга (4842)92-23-67
Кемерово (3842)65-04-62
Киров (8332)68-02-04
Краснодар (861)203-40-90
Красноярск (391)204-63-61
Курск (4712)77-13-04
Липецк (4742)52-20-81
Киргизия (996)312-96-26-47

Магнитогорск (3519)55-03-13
Москва (495)268-04-70
Мурманск (8152)59-64-93
Набережные Челны (8552)20-53-41
Нижний Новгород (831)429-08-12
Новокузнецк (3843)20-46-81
Новосибирск (383)227-86-73
Омск (3812)21-46-40
Орел (4862)44-53-42
Оренбург (3532)37-68-04
Пенза (8412)22-31-16
Россия (495)268-04-70

Пермь (342)205-81-47
Ростов-на-Дону (863)308-18-15
Рязань (4912)46-61-64
Самара (846)206-03-16
Санкт-Петербург (812)309-46-40
Саратов (845)249-38-78
Севастополь (8692)22-31-93
Смоленск (4812)29-41-54
Сочи (862)225-72-31
Ставрополь (8652)20-65-13
Казахстан (772)734-952-31

Сургут (3462)77-98-35
Тверь (4822)63-31-35
Томск (3822)98-41-53
Тула (4872)74-02-29
Тюмень (3452)66-21-18
Ульяновск (8422)24-23-59
Уфа (347)229-48-12
Хабаровск (4212)92-98-04
Челябинск (351)202-03-61
Череповец (8202)49-02-64
Ярославль (4852)69-52-93