



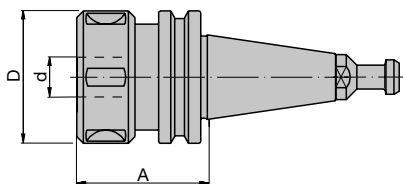
Collet chuck with steep taper SK 30 / SK 40

Application:

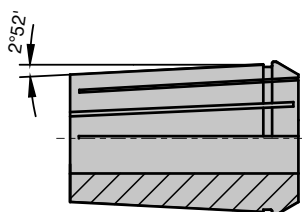
Precision tool chuck with collet for clamping shank tools with cylindrical shank and shank diameters up to $d_{max} = 25.4$ mm (1").

Technical information:

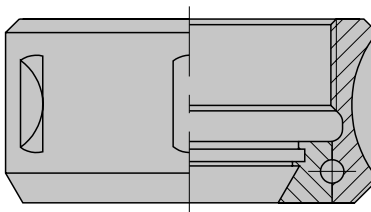
Steep taper design as per DIN ISO 7388, without grooves and notches. Exact concentric running through hardened, ground and double slotted collets. Easy handling as loosening the ball bearing collet nut automatically opens the collet. Suitable for right hand and left hand rotation because of ball bearing collet nut. Ball bearing collet nut for increased clamping forces and improved concentricity compared to monobloc design. Tool chuck and collet nut fine balanced. Suitable mounting device VN 799 0 see section Knives and Spare Parts.



Collet chuck with steep taper



Collet angle 2°52': DIN ISO 10897



Ball bearing collet nut

SK 30, A = 70 mm, diameter range 6-25.4 mm

PM 350 0 05

| Type | D | d | A | Weight | ID |
|------|----|----------|----|--------|-----------------|
| | mm | mm | mm | kg | |
| A | 60 | 6 - 25.4 | 70 | 0.9 | 037421 • |

SK 40, A = 70 mm, diameter range 6-25.4 mm

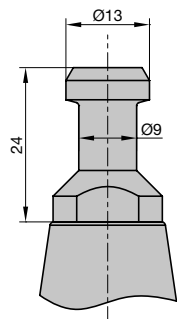
PM 350 0 05

| Type | D | d | A | Weight | ID |
|------|----|----------|----|--------|-----------------|
| | mm | mm | mm | kg | |
| E | 60 | 6 - 25.4 | 70 | 1.5 | 037422 • |

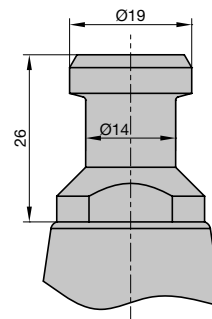
Sales unit consisting of clamping chuck with ball bearing collet nut, without collet or spanner.

Spare parts:

| BEZ | ABM | for S | ID |
|------------------------------------|------------------|--------------|-----------------|
| | mm | mm | |
| Collet (2°52') | | 6 | 037429 • |
| Collet (2°52') | | 8 | 037430 • |
| Collet (2°52') | | 10 | 037431 • |
| Collet (2°52') | | 12 | 037432 • |
| Collet (2°52') | | 13 | 037433 • |
| Collet (2°52') | | 14 | 037434 • |
| Collet (2°52') | | 16 | 037435 • |
| Collet (2°52') | | 18 | 037436 • |
| Collet (2°52') | | 20 | 037437 • |
| Collet (2°52') | | 25 | 037438 • |
| Collet (2°52') | | 6.35 (1/4") | 037495 • |
| Collet (2°52') | | 9.53 (3/8") | 037505 • |
| Collet (2°52') | | 12.7 (1/2") | 037496 • |
| Collet (2°52') | | 15.88 (5/8") | 037502 • |
| Collet (2°52') | | 19.05 (3/4") | 037497 • |
| Collet (2°52') | | 25.4 (1") | 037508 • |
| Sickle spanner | 58/62 | | 005458 • |
| Collet chuck nut with ball bearing | M48x2 | | 005714 • |
| Locking nut with Euchner chip | SK 40, 511 Bytes | | 081600 • |
| Locking nut with Balluff chip | SK 40, 511 Bytes | | 081601 • |



Type: A
SK 30 pull stud as per
DIN ISO 7388



Type: E
SK 40 pull stud as per
DIN ISO 7388

Архангельск (8182)63-90-72
Астана (7172)727-132
Астрахань (8512)99-46-04
Барнаул (3852)73-04-60
Белгород (4722)40-23-64
Брянск (4832)59-03-52
Владивосток (423)249-28-31
Волгоград (844)278-03-48
Вологда (8172)26-41-59
Воронеж (473)204-51-73
Екатеринбург (343)384-55-89
Иваново (4932)77-34-06

Ижевск (3412)26-03-58
Иркутск (395)279-98-46
Казань (843)206-01-48
Калининград (4012)72-03-81
Калуга (4842)92-23-67
Кемерово (3842)65-04-62
Киров (8332)68-02-04
Краснодар (861)203-40-90
Красноярск (391)204-63-61
Курск (4712)77-13-04
Липецк (4742)52-20-81
Киргизия (996)312-96-26-47

Магнитогорск (3519)55-03-13
Москва (495)268-04-70
Мурманск (8152)59-64-93
Набережные Челны (8552)20-53-41
Нижний Новгород (831)429-08-12
Новокузнецк (3843)20-46-81
Новосибирск (383)227-86-73
Омск (3812)21-46-40
Орел (4862)44-53-42
Оренбург (3532)37-68-04
Пенза (8412)22-31-16
Россия (495)268-04-70

Пермь (342)205-81-47
Ростов-на-Дону (863)308-18-15
Рязань (4912)46-61-64
Самара (846)206-03-16
Санкт-Петербург (812)309-46-40
Саратов (845)249-38-78
Севастополь (8692)22-31-93
Симферополь (3652)67-13-56
Смоленск (4812)29-41-54
Сочи (862)225-72-31
Ставрополь (8652)20-65-13
Казахстан (772)734-952-31

Сургут (3462)77-98-35
Тверь (4822)63-31-35
Томск (3822)98-41-53
Тула (4872)74-02-29
Тюмень (3452)66-21-18
Ульяновск (8422)24-23-59
Уфа (347)229-48-12
Хабаровск (4212)92-98-04
Челябинск (351)202-03-61
Череповец (8202)49-02-64
Ярославль (4852)69-52-93



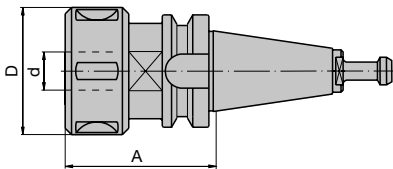
Collet chuck with steep taper BT 30 and BT 35

Application:

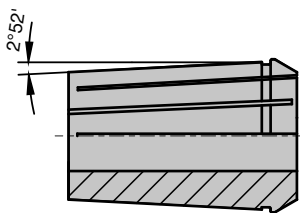
Precision tool chuck with collet for clamping shank tools with cylindrical shank and shank diameters up to $d_{max} = 25.4$ mm (1").

Technical information:

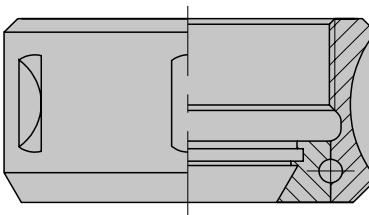
Steep taper design BT 30 or BT 35. Exact concentric running through hardened, ground and double slotted collets. Easy handling as loosening the ball bearing collet nut automatically opens the collet. Suitable for right hand and left hand rotation because of ball bearing collet nut. Ball bearing collet nut for increased clamping forces and improved concentricity compared to monobloc design. Tool chuck and collet nut fine balanced. Suitable mounting device VN 799 0 see section Knives and Spare Parts. (Design for SK 30).



Collet chuck BT 30



Collet angle 2°52': DIN ISO 10897



Ball bearing collet nut

Steep taper BT 30 without grooves and notches

PM 350 0 07

| Type | D mm | d mm | A mm | Weight kg | ID |
|------|---------|----------|---------|--------------|-----------------|
| F | 60 | 6 - 25.4 | 70 | 0.9 | 037962 ● |

Steep taper BT 35 with grooves and notches

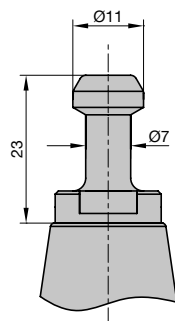
PM 350 0 07

| Type | D mm | d mm | A mm | Weight kg | ID |
|------|---------|----------|---------|--------------|-----------------|
| G | 60 | 6 - 25.4 | 70 | 1 | 037414 ● |

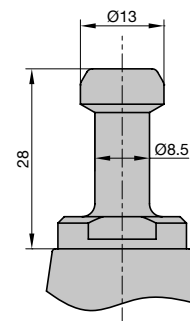
Sales unit consisting of clamping chuck with ball bearing collet nut, without collet or spanner.

Spare parts:

| BEZ | ABM mm | for S mm | ID |
|------------------------------------|-----------|--------------|-----------------|
| Collet (2°52') | | 6 | 037429 ● |
| Collet (2°52') | | 8 | 037430 ● |
| Collet (2°52') | | 10 | 037431 ● |
| Collet (2°52') | | 12 | 037432 ● |
| Collet (2°52') | | 13 | 037433 ● |
| Collet (2°52') | | 14 | 037434 ● |
| Collet (2°52') | | 16 | 037435 ● |
| Collet (2°52') | | 18 | 037436 ● |
| Collet (2°52') | | 20 | 037437 ● |
| Collet (2°52') | | 25 | 037438 ● |
| Collet (2°52') | | 6.35 (1/4") | 037495 ● |
| Collet (2°52') | | 9.53 (3/8") | 037505 ● |
| Collet (2°52') | | 12.7 (1/2") | 037496 ● |
| Collet (2°52') | | 15.88 (5/8") | 037502 ● |
| Collet (2°52') | | 19.05 (3/4") | 037497 ● |
| Collet (2°52') | | 25.4 (1") | 037508 ● |
| Sickle spanner | 58/62 | | 005458 ● |
| Collet chuck nut with ball bearing | M48x2 | | 005714 ● |



Type: F
BT 30 pull stud
Anderson



Type: G
BT 35 pull stud
Heian, Shoda

Архангельск (8182)63-90-72
Астана (7172)727-132
Астрахань (8512)99-46-04
Барнаул (3852)73-04-60
Белгород (4722)40-23-64
Брянск (4832)59-03-52
Владивосток (423)249-28-31
Волгоград (844)278-03-48
Вологда (8172)26-41-59
Воронеж (473)204-51-73
Екатеринбург (343)384-55-89
Иваново (4932)77-34-06

Ижевск (3412)26-03-58
Иркутск (395)279-98-46
Казань (843)206-01-48
Калининград (4012)72-03-81
Калуга (4842)92-23-67
Кемерово (3842)65-04-62
Киров (8332)68-02-04
Краснодар (861)203-40-90
Красноярск (391)204-63-61
Курск (4712)77-13-04
Липецк (4742)52-20-81
Киргизия (996)312-96-26-47

Магнитогорск (3519)55-03-13
Москва (495)268-04-70
Мурманск (8152)59-64-93
Набережные Челны (8552)20-53-41
Нижний Новгород (831)429-08-12
Новокузнецк (3843)20-46-81
Новосибирск (383)227-86-73
Омск (3812)21-46-40
Орел (4862)44-53-42
Оренбург (3532)37-68-04
Пенза (8412)22-31-16
Россия (495)268-04-70

Пермь (342)205-81-47
Ростов-на-Дону (863)308-18-15
Рязань (4912)46-61-64
Самара (846)206-03-16
Санкт-Петербург (812)309-46-40
Саратов (845)249-38-78
Севастополь (8692)22-31-93
Симферополь (3652)67-13-56
Соленск (4812)29-41-54
Сочи (862)225-72-31
Ставрополь (8652)20-65-13
Казахстан (772)734-952-31

Сургут (3462)77-98-35
Тверь (4822)63-31-35
Томск (3822)98-41-53
Тула (4872)74-02-29
Тюмень (3452)66-21-18
Ульяновск (8422)24-23-59
Уфа (347)229-48-12
Хабаровск (4212)92-98-04
Челябинск (351)202-03-61
Череповец (8202)49-02-64
Ярославль (4852)69-52-93