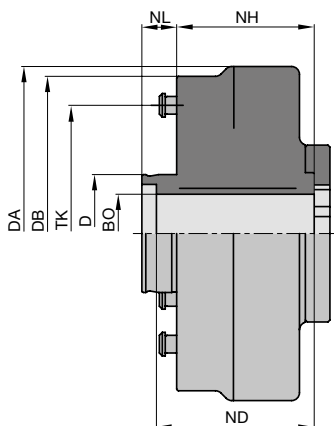


7. Clamping systems

7.2 Quick clamping elements

7.2.1 Hydro clamping - closed system



Hydro quick clamping sleeve type 160 HF

Spindle with safety device against twisting - hexagon HF spindle 40 Quick clamping sleeve type 160 Hydro

Application:

Quick clamping sleeve for tools and hoppers on high precision spindle D = 40 mm with hexagon safety device against twisting.

Machine:

Double-end tenoners, edgbanding machines etc.

Technical information:

Hardened steel tool body, with mechanical quick clamping mechanism without compressed air. Tool is mounted directly on the quick clamping system without intermediate flange, closed hydro clamping system with maintenance free pressure piston mechanism, suitable for right hand and left hand rotation.

RPM $n_{max} = 9000 \text{ min}^{-1}$. Tools must have four bayonet holes on 130 mm pitch.

Attention: Comply with maximum admissible speed for the mounted tools!

For tools and hoppers

PH 110 0 01

BEM	DA	DB	D	ND	NH	NL	BO	TK	Clamping bolts	ID
	mm	mm	mm	mm	mm	mm	mm	mm	PCS	
For HF-spindle with hexagon	170	160	60	80	70	17.7	40	130	4	150100 ●

Spare parts:

BEZ	ABM	ID
	mm	
Securing part	for HF-spindle HF 40	066473 ●
Hexagon key	SW 6	117516 ●

Spindle securing part consists of:

Conical spring washer, clamping screw, hexagon spanner, brace.

Архангельск (8182)63-90-72
Астана (7172)727-132
Астрахань (8512)99-46-04
Барнаул (3852)73-04-60
Белгород (4722)40-23-64
Брянск (4832)59-03-52
Владивосток (423)249-28-31
Волгоград (844)278-03-48
Вологда (8172)26-41-59
Воронеж (473)204-51-73
Екатеринбург (343)384-55-89
Иваново (4932)77-34-06

Ижевск (3412)26-03-58
Иркутск (395)279-98-46
Казань (843)206-01-48
Калининград (4012)72-03-81
Калуга (4842)92-23-67
Кемерово (3842)65-04-62
Киров (8332)68-02-04
Краснодар (861)203-40-90
Красноярск (391)204-63-61
Курск (4712)77-13-04
Липецк (4742)52-20-81
Киргизия (996)312-96-26-47

Магнитогорск (3519)55-03-13
Москва (495)268-04-70
Мурманск (8152)59-64-93
Набережные Челны (8552)20-53-41
Нижний Новгород (831)429-08-12
Новокузнецк (3843)20-46-81
Новосибирск (383)227-86-73
Омск (3812)21-46-40
Орел (4862)44-53-42
Оренбург (3532)37-68-04
Пенза (8412)22-31-16
Россия (495)268-04-70

Пермь (342)205-81-47
Ростов-на-Дону (863)308-18-15
Рязань (4912)46-61-64
Самара (846)206-03-16
Санкт-Петербург (812)309-46-40
Саратов (845)249-38-78
Севастополь (8692)22-31-93
Симферополь (3652)67-13-56
Смоленск (4812)29-41-54
Сочи (862)225-72-31
Ставрополь (8652)20-65-13
Казахстан (772)734-952-31

Сургут (3462)77-98-35
Тверь (4822)63-31-35
Томск (3822)98-41-53
Тула (4872)74-02-29
Тюмень (3452)66-21-18
Ульяновск (8422)24-23-59
Уфа (347)229-48-12
Хабаровск (4212)92-98-04
Челябинск (351)202-03-61
Череповец (8202)49-02-64
Ярославль (4852)69-52-93

7. Clamping systems

7.2 Quick clamping elements

7.2.1 Hydro clamping - closed system



Spindle with safety device against twisting - hexagon HF spindle 40 Quick clamping sleeve type 160 Hydro-Duo

Application:

Quick clamping sleeve for tools and hogsers on high precision spindle D = 40 mm with hexagon safety device against twisting. Double acting hydro centering clamping eliminating the tolerance between spindle, clamping element and tool.

Machine:

Double end tenoners, edgbanding machines etc.

Technical information:

Hardened steel tool body, with mechanical quick clamping mechanism without compressed air. Tool is mounted directly on the quick clamping system without intermediate flange, closed hydro clamping system with maintenance free pressure piston mechanism, suitable for right hand and left hand rotation.

RPM $n_{max} = 9000 \text{ min}^{-1}$. Tools must have four bayonet holes on 130 mm pitch.

Attention: Comply with maximum admissible speed for the mounted tools!



For tools and hogsers

PH 110 0 02

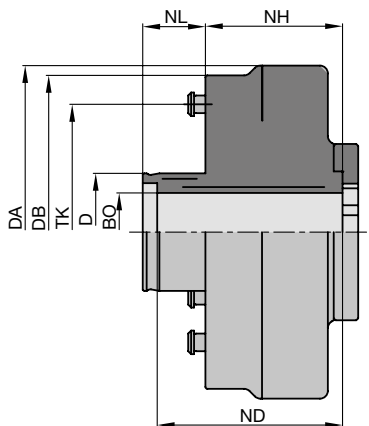
BEM	DA	DB	D	ND	NH	NL	BO	TK	Clamping bolts ID
	mm	mm	mm	mm	mm	mm	mm	mm	PCS
For HF-spindle with hexagon	170	160	60	80	56	32	40	130	4
									150200 ●

Spare parts:

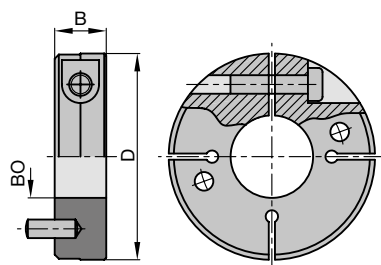
BEZ	ABM	ID
	mm	
Securing part	for HF-spindle HF 40	066473 ●
Hexagon key	SW 6	117516 ●

Spindle securing part consists of:

Conical spring washer, clamping screw, hexagon spanner, brace.



Hydro-Duo quick clamping sleeve type 160 HF



Clamping collar without thread

Clamping collars without thread

TD 870 0

D	B	BO	ID
mm	mm	mm	
100	25	40	030700 ●
100	25	50	030702 ●

Архангельск (8182)63-90-72
Астана (7172)727-132
Астрахань (8512)99-46-04
Барнаул (3852)73-04-60
Белгород (4722)40-23-64
Брянск (4832)59-03-52
Владивосток (423)249-28-31
Волгоград (844)278-03-48
Вологда (8172)26-41-59
Воронеж (473)204-51-73
Екатеринбург (343)384-55-89
Иваново (4932)77-34-06

Ижевск (3412)26-03-58
Иркутск (395)279-98-46
Казань (843)206-01-48
Калининград (4012)72-03-81
Калуга (4842)92-23-67
Кемерово (3842)65-04-62
Киров (8332)68-02-04
Краснодар (861)203-40-90
Красноярск (391)204-63-61
Курск (4712)77-13-04
Липецк (4742)52-20-81
Киргизия (996)312-96-26-47

Магнитогорск (3519)55-03-13
Москва (495)268-04-70
Мурманск (8152)59-64-93
Набережные Челны (8552)20-53-41
Нижний Новгород (831)429-08-12
Новокузнецк (3843)20-46-81
Новосибирск (383)227-86-73
Омск (3812)21-46-40
Орел (4862)44-53-42
Оренбург (3532)37-68-04
Пенза (8412)22-31-16
Россия (495)268-04-70

Пермь (342)205-81-47
Ростов-на-Дону (863)308-18-15
Рязань (4912)46-61-64
Самара (846)206-03-16
Санкт-Петербург (812)309-46-40
Саратов (845)249-38-78
Севастополь (8692)22-31-93
Симферополь (3652)67-13-56
Смоленск (4812)29-41-54
Сочи (862)225-72-31
Ставрополь (8652)20-65-13
Казахстан (772)734-952-31

Сургут (3462)77-98-35
Тверь (4822)63-31-35
Томск (3822)98-41-53
Тула (4872)74-02-29
Тюмень (3452)66-21-18
Ульяновск (8422)24-23-59
Уфа (347)229-48-12
Хабаровск (4212)92-98-04
Челябинск (351)202-03-61
Череповец (8202)49-02-64
Ярославль (4852)69-52-93