

7. Clamping systems

7.1 Clamping elements

7.1.1 Hydro clamping - open system



For spindle without safety device against twisting

Application:

Clamping sleeve for centric, play-free clamping of tools and cutterheads.

Machine:

Machines with high precision spindles e.g. moulders etc.

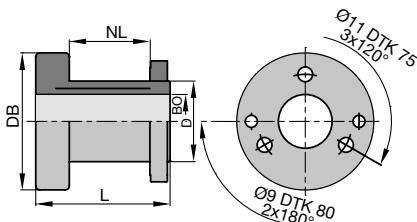
Technical information:

Hydro-Duo open clamping system, activation of hydro clamping by a grease gun. Suitable for right and left hand rotation.

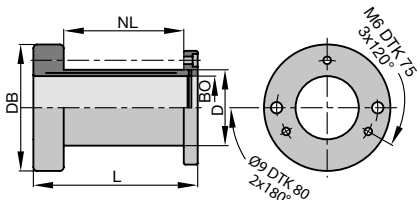
With clamping nut

PH 130 0 01

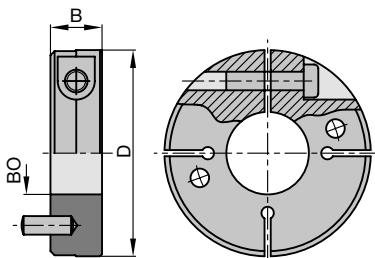
D	BO	NL	L	DB	ID
60	40	60	100	102	030503 ●
60	45	60	100	102	030505 ●
60	50	60	100	102	030507 ●
60	50	40	80	102	030515 ●



Hydro-Duo clamping element
PH 130 0 01 with clamping nut



Hydro-Duo clamping element
PH 130 0 02 with end ring and clamping screws



Clamping collar without thread

Spare parts:

BEZ	ABM	ID
	mm	
Sickle spanner adjustable	D90/155; L290; DIN1816; tenon 6	005462 ●
Grease gun		008239 ●
Grease cartridge	for Hydro sleeve	007934 ●
Grease nipple	M10x1	007935 ●

With end ring and clamping screws

PH 130 0 02

D	BO	NL	L	DB	ID
50	40	95	130	92	030600 ●
60	45	35	55	102	030605 ●
60	50	95	130	102	030602 ●

Spare parts:

BEZ	ABM	ID
	mm	
Allen key	SW 5	005452 ●
Grease gun		008239 ●
Grease cartridge	for Hydro sleeve	007934 ●
Grease nipple	M10x1	007935 ●
Cylindrical screw with ISK	M6x70	005936 ●
Cylindrical screw with ISK	M6x120	005942 ●

Clamping collars without thread

TD 870 0

D	B	BO	ID
100	25	40	030700 ●
100	25	45	030701 ●
100	25	50	030702 ●

Архангельск (8182)63-90-72
Астана (7172)727-132
Астрахань (8512)99-46-04
Барнаул (3852)73-04-60
Белгород (4722)40-23-64
Брянск (4832)59-03-52
Владивосток (423)249-28-31
Волгоград (844)278-03-48
Вологда (817)26-41-59
Воронеж (473)204-51-73
Екатеринбург (343)384-55-89
Иваново (4932)77-34-06

Ижевск (3412)26-03-58
Иркутск (395)279-98-46
Казань (843)206-01-48
Калининград (4012)72-03-81
Калуга (4842)92-23-67
Кемерово (3842)65-04-62
Киров (8332)68-02-04
Краснодар (861)203-40-90
Красноярск (391)204-63-61
Курск (4712)77-13-04
Липецк (4742)52-20-81
Киргизия (996)312-96-26-47

Магнитогорск (3519)55-03-13
Москва (495)268-04-70
Мурманск (8152)59-64-93
Набережные Челны (8552)20-53-41
Нижний Новгород (831)429-08-12
Новокузнецк (3843)20-46-81
Новосибирск (383)227-86-73
Омск (3812)21-46-40
Орел (4862)44-53-42
Оренбург (3532)37-68-04
Пенза (8412)22-31-16
Россия (495)268-04-70

Пермь (342)205-81-47
Ростов-на-Дону (863)308-18-15
Рязань (4912)46-61-64
Самара (846)206-03-16
Санкт-Петербург (812)309-46-40
Саратов (845)249-38-78
Севастополь (8692)22-31-93
Симферополь (3652)67-13-56
Смоленск (4812)29-41-54
Сочи (862)225-72-31
Ставрополь (8652)20-65-13
Казахстан (772)734-952-31

Сургут (3462)77-98-35
Тверь (4822)63-31-35
Томск (3822)98-41-53
Тула (4872)74-02-29
Тюмень (3452)66-21-18
Ульяновск (8422)24-23-59
Уфа (347)229-48-12
Хабаровск (4212)92-98-04
Челябинск (351)202-03-61
Череповец (8202)49-02-64
Ярославль (4852)69-52-93

7. Clamping systems

7.1 Clamping elements

7.1.2 Hydro clamping - closed system



Spindle with safety device against twisting - hexagon HF spindle 40 Hydro clamping sleeve

Application:

Hydro clamping sleeve for play-free clamping of hogging/cutting tools on high precision spindle with hexagon safety device against twisting (HF spindle) for high concentricity.

Machine:

Machines with high precision spindles, e.g. moulders, double-end tenoners, edgbanding machines etc.

Technical information:

Closed hydro clamping system with maintenance free pressure piston mechanism. RPM n_{max} 12000 min⁻¹.

Attention: Comply with maximum admissible speed for the mounted tools!



For cutting tools and hogsers with bore 60/80 mm

PH 130 0 03

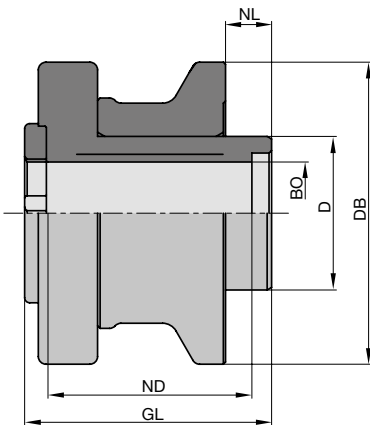
D	BO	NL	ND	GL	DB	ID
mm	mm	mm	mm	mm	mm	
60	40	18	80.3	96.5	118	061702 ●
80	40	18	80.3	96.5	118	061703 ●

Spindle fixture consisting of:

Conical spring washer, clamping screw, hexagon spanner, brace.

Spare parts:

BEZ	ABM	ID
	mm	
Securing part	for HF-spindle HF 40	066473 ●



Hydro clamping sleeve PH 130 0 03

7. Clamping systems

7.1 Clamping elements

7.1.2 Hydro clamping - closed system



Spindle with safety device against twisting - hexagon HF spindle 40 Hydro-Duo clamping sleeve

Application:

Hydro-Duo clamping element for play-free clamping cutting tools on high precision spindle with hexagon safety device against twisting (HF spindle) for high concentricity.

Machine:

Machines with high precision spindles, e.g. moulders, double-end tenoners, edgbanding machines etc.

Technical information:

Closed hydro clamping system with maintenance free pressure piston mechanism. RPM n_{max} 12000 min⁻¹.

Attention: Comply with maximum admissible speed for the mounted tools!



With end ring and clamping screws, for tool sets with bore 60 mm

PH 130 0 04

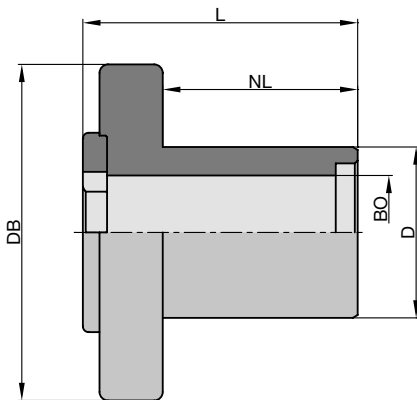
D	BO	NL	L	DB	ID
mm	mm	mm	mm	mm	
60	40	68	96.5	118	030559 ●

Spindle fixture consisting of:

Conical spring washer, clamping screw, hexagon spanner, brace.

Spare parts:

BEZ	ABM	ID
	mm	
Securing part	for HF-spindle HF 40	066473 ●
Allen key	SW 5	005452 ●



Hydro Duo clamping element
PH 130 0 04

7. Clamping systems

7.1 Clamping elements

7.1.2 Hydro clamping - closed system

For spindle without safety device against twisting



Application:

Clamping sleeve for centric clamping of tools, tool sets and cutterheads.

Machine:

Machines with high precision spindles, e.g. moulders, double-end tenoners, edgbanding machines, window production machines etc.

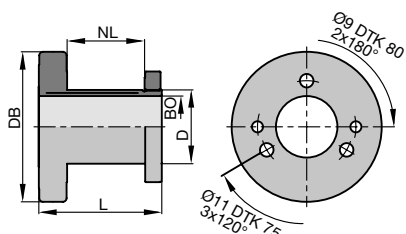
Technical information:

Hydro-Duo closed hydro clamping system, activation of hydro clamping by internal clamping system without grease gun. Suitable for right and left hand rotation.

With clamping nut

PH 130 0 05

D	BO	NL	L	DB	ID
mm	mm	mm	mm	mm	
60	45	60	100	122	031603
60	50	63	100	122	031601 •
70	60	43	80	130	031605



Hydro-Duo clamping element
PH 130 0 05 with clamping nut

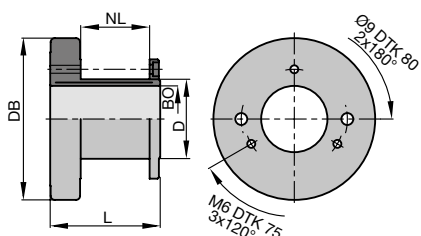
Spare parts:

BEZ	ABM	ID
	mm	
Sickle spanner adjustable	D90/155; L290; DIN1816; tenon 6	005462 •

With end ring and clamping screws

PH 130 0 06

D	BO	NL	L	DB	ID
mm	mm	mm	mm	mm	
60	50	52	83	122	031650 •



Hydro-Duo clamping element
PH 130 0 06 with end ring and clamping
screws

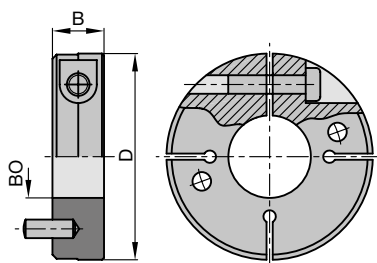
Spare parts:

BEZ	ABM	ID
	mm	
Allen key	SW 5	005452 •
Cylindrical screw with ISK	M6x70	005936 •

Clamping collars without thread

TD 870 0

D	B	BO	ID
mm	mm	mm	
100	25	45	030701 •
100	25	50	030702 •



Clamping collar without thread

7. Clamping systems

7.1 Clamping elements

7.1.2 Hydro clamping - closed system



Spindle with safety device against twisting - hexagon HF spindle 40 Hydro-Duo clamping sleeve, adjustable

Application:

Hydro-Duo clamping sleeve for play-free clamping cutting tools on high precision spindle with hexagon safety device against twisting (HF spindle). With extra fine thread and dual piston clamping for stepless adjustment of 2 part tool sets on the spindle.

Machine:

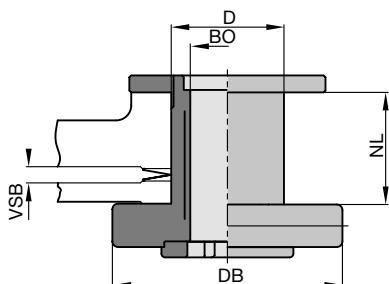
Machines with high precision spindles, e.g. moulders, double-end tenoners, edgbanding machines etc.

Technical information:

Closed hydro clamping system with maintenance free pressure piston mechanism. RPM n_{max} 12000 min⁻¹.

Dual piston clamping, independent clamping: sleeve - spindle and sleeve - tool.

Attention: Comply with maximum admissible speed for the mounted tools!



Hydro-Duo clamping sleeve with fine adjustment PH 130 0 07

With dual piston clamping and hexagon safety device against twisting, fine adjustment

PH 130 0 07

D	BO	NL	DB	VSB	ID
mm	mm	mm	mm		
60	40	58	122	2	030553 ●
60	40	58	122	10	030556 ●

Included in delivery: Duo sleeve complete with parts for mounting cutter and adjusting mechanism.

Spare parts:

BEZ	ABM	ID
	mm	
Allen key	SW 5	005452 ●

Архангельск (8182)63-90-72
Астана (7172)727-132
Астрахань (8512)99-46-04
Барнаул (3852)73-04-60
Белгород (4722)40-23-64
Брянск (4832)59-03-52
Владивосток (423)249-28-31
Волгоград (844)278-03-48
Вологда (8172)26-41-59
Воронеж (473)204-51-73
Екатеринбург (343)384-55-89
Иваново (4932)77-34-06

Ижевск (3412)26-03-58
Иркутск (395)279-98-46
Казань (843)206-01-48
Калининград (4012)72-03-81
Калуга (4842)92-23-67
Кемерово (3842)65-04-62
Киров (8332)68-02-04
Краснодар (861)203-40-90
Красноярск (391)204-63-61
Курск (4712)77-13-04
Липецк (4742)52-20-81
Киргизия (996)312-96-26-47

Магнитогорск (3519)55-03-13
Москва (495)268-04-70
Мурманск (8152)59-64-93
Набережные Челны (8552)20-53-41
Нижний Новгород (831)429-08-12
Новокузнецк (3843)20-46-81
Новосибирск (383)227-86-73
Омск (3812)21-46-40
Орел (4862)44-53-42
Оренбург (3532)37-68-04
Пенза (8412)22-31-16
Россия (495)268-04-70

Пермь (342)205-81-47
Ростов-на-Дону (863)308-18-15
Рязань (4912)46-61-64
Самара (846)206-03-16
Санкт-Петербург (812)309-46-40
Саратов (845)249-38-78
Севастополь (8692)22-31-93
Симферополь (3652)67-13-56
Смоленск (4812)29-41-54
Сочи (862)225-72-31
Ставрополь (8652)20-65-13
Казахстан (772)734-952-31

Сургут (3462)77-98-35
Тверь (4822)63-31-35
Томск (3822)98-41-53
Тула (4872)74-02-29
Тюмень (3452)66-21-18
Ульяновск (8422)24-23-59
Уфа (347)229-48-12
Хабаровск (4212)92-98-04
Челябинск (351)202-03-61
Череповец (8202)49-02-64
Ярославль (4852)69-52-93

<https://leitz.nt-rt.ru/> || lzt@nt-rt.ru