

7. Clamping systems

7.1 Clamping elements

7.1.2 Hydro clamping - closed system



Spindle without safety device against twisting - Hydro-Duo clamping sleeve with stepless fine adjustment of 2 part tool sets

Application:

Hydro-Duo clamping sleeve with fine thread and axial piston clamping for stepless adjustment of 2 part tool sets. Additional clamping collar with safety device against twisting.

Machine:

Machines with high precision spindles, e.g. moulders, double-end tenoners, edgbanding machines etc.

Technical information:

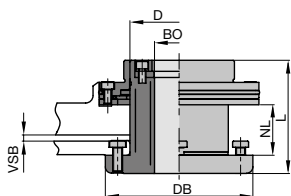
High precision fine thread adjustment with a 0.01 mm scale for fine adjustment of 2 part cuttersets with repeatability. Adjustment range 10 mm. Maintenance free hydro clamping mechanism.



With Hydro-Duo 2 chamber axial piston clamping and fine adjustment

PH 130 0 11

D	BO	BO	L	DB	VSB	ID
mm	mm	in	mm	mm		
80	40		117	120	10	031555 □
80	45		117	120	10	031556 □
80	46.04	1 13/15"	117	120	10	031557 □
100	50		117	140	10	030566 □
100	53.97	2 1/8"	117	140	10	031552 □



Hydro-Duo clamping element with axial piston clamping and fine adjustment
PH 130 0 11

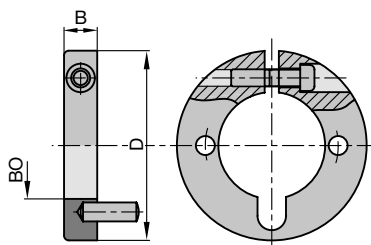
Spare parts:

BEZ	ABM	ID
	mm	
Allen key	SW 5	005452 ●

Clamping collars without thread

TD 870 0

D	B	BO	BO	ID
mm	mm	mm	in	
80	14	40		030713 ●
80	14	45		030714 ●
80	14	46.04	1 13/15"	030715 ●
80	14	50		030716 ●
80	14	53.97	2 1/8"	030717 ●



Clamping collar without thread

Архангельск (8182)63-90-72
Астана (7172)727-132
Астрахань (8512)99-46-04
Барнаул (3852)73-04-60
Белгород (4722)40-23-64
Брянск (4832)59-03-52
Владивосток (423)249-28-31
Волгоград (844)278-03-48
Вологда (8172)26-41-59
Воронеж (473)204-51-73
Екатеринбург (343)384-55-89
Иваново (4932)77-34-06

Ижевск (3412)26-03-58
Иркутск (395)279-98-46
Казань (843)206-01-48
Калининград (4012)72-03-81
Калуга (4842)92-23-67
Кемерово (3842)65-04-62
Киров (8332)68-02-04
Краснодар (861)203-40-90
Красноярск (391)204-63-61
Курск (4712)77-13-04
Липецк (4742)52-20-81
Киргизия (996)312-96-26-47

Магнитогорск (3519)55-03-13
Москва (495)268-04-70
Мурманск (8152)59-64-93
Набережные Челны (8552)20-53-41
Нижний Новгород (831)429-08-12
Новокузнецк (3843)20-46-81
Новосибирск (383)227-86-73
Омск (3812)21-46-40
Орел (4862)44-53-42
Оренбург (3532)37-68-04
Пенза (8412)22-31-16
Россия (495)268-04-70

Пермь (342)205-81-47
Ростов-на-Дону (863)308-18-15
Рязань (4912)46-61-64
Самара (846)206-03-16
Санкт-Петербург (812)309-46-40
Саратов (845)249-38-78
Севастополь (8692)22-31-93
Симферополь (3652)67-13-56
Смоленск (4812)29-41-54
Сочи (862)225-72-31
Ставрополь (8652)20-65-13
Казахстан (772)734-952-31

Сургут (3462)77-98-35
Тверь (4822)63-31-35
Томск (3822)98-41-53
Тула (4872)74-02-29
Тюмень (3452)66-21-18
Ульяновск (8422)24-23-59
Уфа (347)229-48-12
Хабаровск (4212)92-98-04
Челябинск (351)202-03-61
Череповец (8202)49-02-64
Ярославль (4852)69-52-93

7. Clamping systems

7.1 Clamping elements

7.1.2 Hydro clamping - closed system



For spindle without safety device against twisting - Hydro-Duo clamping sleeve for saws, cutters and hoggers

Application:

Hydro-Duo clamping sleeve for high precision clamping and flexible positioning of saws, cutters and hoggers on spindles without using spacers or spindle nuts.

Machine:

Multi-blade circular saw machines, four-sided moulders, double-end tenoners etc.

Technical information:

Closed hydro clamping system with maintenance free pressure piston mechanism.

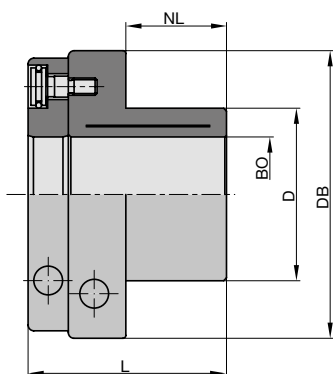


With integrated safety device against twisting

PH 130 0 10

D	BO	NLA	NL	L	DB	ID
mm	mm	mm	mm	mm	mm	
60	40	3/M6/75	35	69	100	030572 ●
60	50	3/M6/75	35	69	100	030574 ●
90	70	6/M6/106	35	70	120	030571
115	100	6/M6/131	14	49.5	145	030557 ●
115	100	6/M6/131	48.5	84	145	030555 ●

with clamping screws.



Spacer set, aluminium screwed, for mounting saws

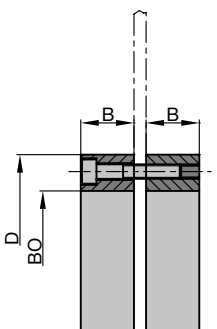
AT 102 0

D	B	BO	NLA	ID
mm	mm	mm	mm	
120	30	90	6/7/106	028482 ●
145	44	115	6/7/131	028480 ●

Steel spacers, for mounting sets of sawblades

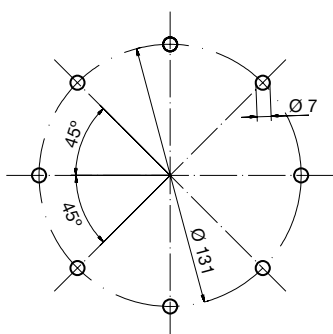
TR 100 0

D	B	BO	NLA	ID
mm	mm	mm	mm	
120	0.5	90	8/7/106	028679 ●
120	1	90	8/7/106	028680 ●
120	3	90	8/7/106	028681 ●
120	5	90	8/7/106	028682 ●
145	0.5	115	8/7/131	028683 ●
145	1	115	8/7/131	028684 ●
145	3	115	8/7/131	028685 ●
145	5	115	8/7/131	028686 ●

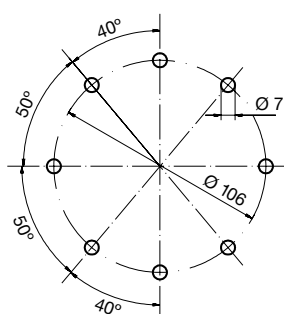


Set of spacers

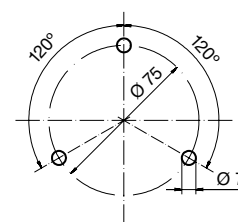
Bore pattern for tools for mounting on:



Hydro sleeve ID 030555 and 030557



Hydro sleeve ID 030571



Hydro sleeve ID 030572 und 030574

7. Clamping systems

7.1 Clamping elements

7.1.2 Hydro clamping - closed system



For spindle without safety device against twisting

Application:

Clamping sleeve for centric, play-free clamping of tool sets, for window tools on stacked spindle machines.

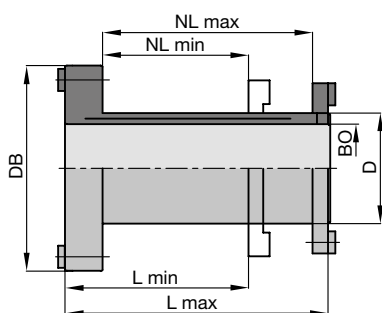
Machine:

Machines with high precision spindles, e.g. moulders, double-end tenoners, edgebanding machines, window production machines etc.

Technical information:

Hydro-Duo closed hydro clamping system, activation of hydro clamping by internal clamping system without grease gun.

Total length of sleeves adjusted as required.



Hydro-Duo clamping element PH 130 0 13 with end ring, clamping screws and safety device against twisting

With end ring, clamping screws and safety device against twisting

PH 130 0 13

D	BO	NL	L	DB	ID
mm	mm	mm	mm	mm	
50	40	35 - 55	60 - 80	85	031658 □
50	40	55 - 75	80 - 100	85	031659 □
50	40	75 - 95	100 - 120	85	031660 ●
60	40	95 - 115	120 - 140	93	031661 ●
60	50	35 - 55	60 - 80	93	031655 ●
60	50	55 - 75	80 - 100	93	031652 ●
60	50	75 - 95	100 - 120	93	031653 ●
60	50	95 - 115	120 - 140	93	031654 ●
60	50	115 - 135	140 - 160	93	031657 ●

Spare parts:

BEZ	ABM	BEM	ID
	mm		
Cylindrical screw with ISK	M6x50		005932 ●
Cylindrical screw with ISK	M6x70		005936 ●
Cylindrical screw with ISK	M6x90		005939 ●
Cylindrical screw with ISK	M6x100		005940 ●
Cylindrical screw with ISK	M6x110		005941 ●
Cylindrical screw with ISK	M6x130		006542 ●
Cylindrical screw with ISK	M6x150		006400 ●
Countersink screw, Torx® 15	M4x6	for feather key 3	007436 ●
Countersink screw, Torx® 15	M4x10-12.9	for feather key 1,2,4	007437 ●
Feather key 1	19x8x7		008525 ●
Feather key 2	10x8.5x6.5		008526 ●
Feather key 3	19x8x3.5		008527 ●
Feather key 4	19x8x7		008528 ●
Allen key	SW 5		005452 ●
Torx® key	Torx® 15		117507 ●

End ring with safety device against twisting

TR 112 0

D	BO	TK	DIK	ID
mm	mm		mm	
85	50	65	8	008245 ●
93	60	75	8	008222 ●

7. Clamping systems

7.1 Clamping elements

7.1.2 Hydro clamping - closed system



Spindle with safety device against twisting - hexagon HF spindle 40 Hydro-Duo clamping sleeve, adjustable

Application:

Hydro-Duo clamping sleeve for play-free clamping cutting tools on high precision spindle with hexagon safety device against twisting (HF spindle). Model with extra fine thread and axial dual piston clamping for stepless adjustment of 2 part tool sets on the spindle.

Machine:

Machines with high precision spindles, e.g. moulders, double-end tenoners, edgbanding machines etc.

Technical information:

Closed Hydro-Duo clamping system with axial dual piston clamping, independent clamping: sleeve - spindle and sleeve - tool.

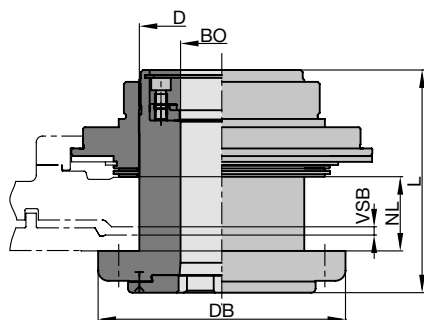
With dual piston clamping and hexagon safety device against twisting, fine adjustment

PH 130 0 14

D	BO	NL	L	DB	VSB	ID
mm	mm	mm	mm	mm		
80	40	45	108	120	4	031560 □
80	40	54	108	120	10	030562 □

Spare parts:

BEZ	ABM	ID
	mm	
Allen key	SW 5	005452 •



Hydro-Duo clamping element with axial piston clamping and fine adjustment
PH 130 0 14

Архангельск (8182)63-90-72
Астана (7172)727-132
Астрахань (8512)99-46-04
Барнаул (3852)73-04-60
Белгород (4722)40-23-64
Брянск (4832)59-03-52
Владивосток (423)249-28-31
Волгоград (844)278-03-48
Вологда (8172)26-41-59
Воронеж (473)204-51-73
Екатеринбург (343)384-55-89
Иваново (4932)77-34-06

Ижевск (3412)26-03-58
Иркутск (395)279-98-46
Казань (843)206-01-48
Калининград (4012)72-03-81
Калуга (4842)92-23-67
Кемерово (3842)65-04-62
Киров (8332)68-02-04
Краснодар (861)203-40-90
Красноярск (391)204-63-61
Курск (4712)77-13-04
Липецк (4742)52-20-81
Киргизия (996)312-96-26-47

Магнитогорск (3519)55-03-13
Москва (495)268-04-70
Мурманск (8152)59-64-93
Набережные Челны (8552)20-53-41
Нижний Новгород (831)429-08-12
Новокузнецк (3843)20-46-81
Новосибирск (383)227-86-73
Омск (3812)21-46-40
Орел (4862)44-53-42
Оренбург (3532)37-68-04
Пенза (8412)22-31-16
Россия (495)268-04-70

Пермь (342)205-81-47
Ростов-на-Дону (863)308-18-15
Рязань (4912)46-61-64
Самара (846)206-03-16
Санкт-Петербург (812)309-46-40
Саратов (845)249-38-78
Севастополь (8692)22-31-93
Симферополь (3652)67-13-56
Смоленск (4812)29-41-54
Сочи (862)225-72-31
Ставрополь (8652)20-65-13
Казахстан (772)734-952-31

Сургут (3462)77-98-35
Тверь (4822)63-31-35
Томск (3822)98-41-53
Тула (4872)74-02-29
Тюмень (3452)66-21-18
Ульяновск (8422)24-23-59
Уфа (347)229-48-12
Хабаровск (4212)92-98-04
Челябинск (351)202-03-61
Череповец (8202)49-02-64
Ярославль (4852)69-52-93

<https://leitz.nt-rt.ru/> || lzt@nt-rt.ru