



### Hydro clamping arbor HSK-F 63 / HSK-E 63

#### Application:

For precise and play free mounting of tools with bore, such as saw blades, tools, toolsets and cutterheads.

#### Machine:

Machines with HSK-F 63 or HSK-E 63 adaptor, e.g. moulders, window producing machines, CNC-machining centres etc.

#### Technical information:

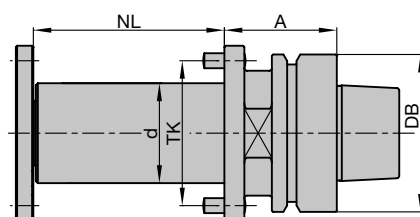
Hollow taper shank design as per DIN 69863. Play free and precise adaption of bore tools through hydro clamping arbors. Axial clamping actuation of the closed hydro system. Safety against twisting of the tools through pins and screws.

**Note:** Please observe the admitted maximum weight and diameters as well as the maximum tool RPM of the machine producer!

#### HSK-F / E 63, A = 45 / 90 mm

PH 160 0 04, PH 160 0 05

Type	NL	d	A	DB	TK	ID
	mm	mm	mm	mm		
HSK-F 63	100	40	45	63	58	<b>663811</b>
HSK-F 63	140	40	45	63	58	<b>663812</b>
HSK-F 63	190	40	45	63	58	<b>663813</b> ●
HSK-F 63	190	40	90	63	58	<b>663814</b>
HSK-E 63	190	40	45	63	58	<b>663815</b>
HSK-E 63	190	40	90	63	58	<b>663816</b>



Hydro clamping arbor HSK-F 63

### Hydro clamping arbor HSK-F 63 mod.

#### Application:

Hydro clamping arbor for precise and play free mounting of tools with bore such as circular saw blades, tools, toolsets and cutterheads for high concentricity.

#### Machine:

Machines with HSK-F 63 interface, e.g. laminate and parquet flooring lines, edge-banding machines, double end tenoners, profile cutting machines, etc.

#### Technical information:

Closed hydro clamping system with maintenance free pressurising piston mechanism. User friendly axial positioned hydro clamping screw. Play free and precise mounting of tools with bores on hydro clamping arbors. Suitable for RH and LH. RPM  $n_{max}$  12000<sup>-1</sup>.

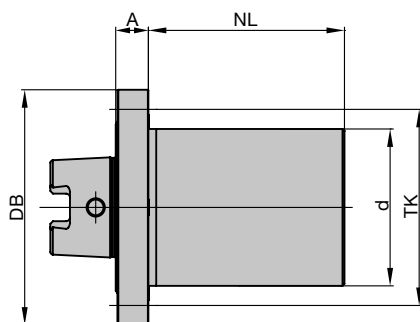
**Note:** Check the allowed maximum RPM of the tool mounted on the arbor!

#### HSK-F 63 mod. for tools with bore 60 mm, A = 12.5 mm

PH 160 0 02

Machine	NL	d	A	DB	TK	ID
	mm	mm	mm	mm		
Homag	75	60	12.5	90	75	<b>663804</b>

Suitable spacers, see section Knives and Spare Parts.



Hydro clamping arbor HSK-F 63 mod.  
PH 160 0 02

Архангельск (8182)63-90-72  
Астана (7172)727-132  
Астрахань (8512)99-46-04  
Барнаул (3852)73-04-60  
Белгород (4722)40-23-64  
Брянск (4832)59-03-52  
Владивосток (423)249-28-31  
Волгоград (844)278-03-48  
Вологда (8172)26-41-59  
Воронеж (473)204-51-73  
Екатеринбург (343)384-55-89  
Иваново (4932)77-34-06

Ижевск (3412)26-03-58  
Иркутск (395)279-98-46  
Казань (843)206-01-48  
Калининград (4012)72-03-81  
Калуга (4842)92-23-67  
Кемерово (3842)65-04-62  
Киров (8332)68-02-04  
Краснодар (861)203-40-90  
Красноярск (391)204-63-61  
Курск (4712)77-13-04  
Липецк (4742)52-20-81  
Киргизия (996)312-96-26-47

Магнитогорск (3519)55-03-13  
Москва (495)268-04-70  
Мурманск (8152)59-64-93  
Набережные Челны (8552)20-53-41  
Нижний Новгород (831)429-08-12  
Новокузнецк (3843)20-46-81  
Новосибирск (383)227-86-73  
Омск (3812)21-46-40  
Орел (4862)44-53-42  
Оренбург (3532)37-68-04  
Пенза (8412)22-31-16  
Россия (495)268-04-70

Пермь (342)205-81-47  
Ростов-на-Дону (863)308-18-15  
Рязань (4912)46-61-64  
Самара (846)206-03-16  
Санкт-Петербург (812)309-46-40  
Саратов (845)249-38-78  
Севастополь (8692)22-31-93  
Симферополь (3652)67-13-56  
Смоленск (4812)29-41-54  
Сочи (862)225-72-31  
Ставрополь (8652)20-65-13  
Казахстан (772)734-952-31

Сургут (3462)77-98-35  
Тверь (4822)63-31-35  
Томск (3822)98-41-53  
Тула (4872)74-02-29  
Тюмень (3452)66-21-18  
Ульяновск (8422)24-23-59  
Уфа (347)229-48-12  
Хабаровск (4212)92-98-04  
Челябинск (351)202-03-61  
Череповец (8202)49-02-64  
Ярославль (4852)69-52-93

## 7. Clamping systems

### 7.4 Clamping arbors

#### 7.4.1 Hydro clamping arbors



#### Hydro clamping arbor HSK-F 63 mod. with stepless fine adjustment

##### Application:

Hydro clamping arbor for precise and play free mounting of tools with bore such as circular saw blades, toolsets and sets of cutterheads for high concentricity. Fine thread design of the hydro clamping arbor allows stepless fine adjustment of multi part tooling sets.

##### Machine:

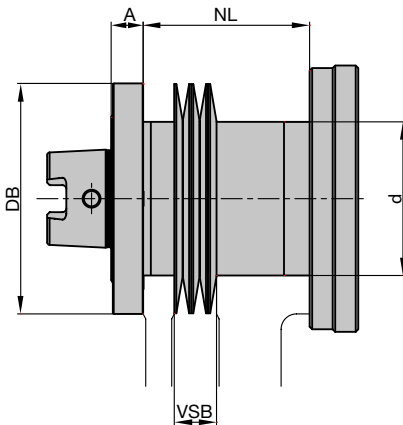
Machines with HSK-F 63 adaptor, e.g. laminate and parquet flooring lines, edge-banding machines, double end tenoners, profile cutting machines, etc.

##### Technical information:

Closed hydro clamping system with maintenance free pressurising piston mechanism. User friendly axial positioned hydro clamping screw. Play free and precise mounting of tools with bores on hydro clamping arbors. Suitable for RH and LH.

RPM  $n_{max}$  12000<sup>-1</sup>.

**Note:** Check the allowed maximum RPM of the tool mounted on the arbor!



##### HSK-F 63 mod. for tools with bore 60 mm, A = 12.5 mm

PH 160 0 03

Machine	NL mm	d mm	VSB	A mm	DB mm	TK	ID
Homag	55 - 65	60	10	12.5	90	75	663803 ●

Hydro clamping arbor HSK-F 63 mod.  
with stepless fine adjustment  
PH 160 0 03

## 7. Clamping systems

### 7.4 Clamping arbors

#### 7.4.1 Hydro clamping arbors



#### Hydro clamping arbor HSK 85 WS

##### Application:

For precise, play free mounting of tools with bore, such as saw blades, cutting tools, sets of cutting tools and cutterheads.

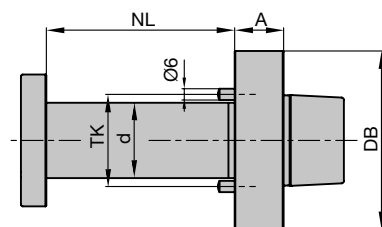
##### Machine:

Machines with HSK 85 WS adaptor e.g. moulders (Weinig Powermat), window production machines, etc.

##### Technical information:

Play free and precise mounting of tools with bore by hydro arbors. Radial clamping by closed hydro system. Easy and safe handling with optionally lifting rings.

**Note:** Observe the information of the machine producer for the permitted maximum weight and diameter as well as the maximum tool RPM!



Hydro clamping arbor HSK 85 WS - PH 160 0 01

#### HSK 85 WS, A = 26 mm

PH 160 0 01

Machine	NL	d	A	DB	TK	ID
	mm	mm	mm	mm		
Weinig	100	40	26	95	58	663800 ●
Weinig	170	40	26	95	58	663802 ●

Suitable spacers, see section Knives and Spare Parts.

Архангельск (8182)63-90-72  
Астана (7172)727-132  
Астрахань (8512)99-46-04  
Барнаул (3852)73-04-60  
Белгород (4722)40-23-64  
Брянск (4832)59-03-52  
Владивосток (423)249-28-31  
Волгоград (844)278-03-48  
Вологда (8172)26-41-59  
Воронеж (473)204-51-73  
Екатеринбург (343)384-55-89  
Иваново (4932)77-34-06

Ижевск (3412)26-03-58  
Иркутск (395)279-98-46  
Казань (843)206-01-48  
Калининград (4012)72-03-81  
Калуга (4842)92-23-67  
Кемерово (3842)65-04-62  
Киров (8332)68-02-04  
Краснодар (861)203-40-90  
Красноярск (391)204-63-61  
Курск (4712)77-13-04  
Липецк (4742)52-20-81  
Киргизия (996)312-96-26-47

Магнитогорск (3519)55-03-13  
Москва (495)268-04-70  
Мурманск (8152)59-64-93  
Набережные Челны (8552)20-53-41  
Нижний Новгород (831)429-08-12  
Новокузнецк (3843)20-46-81  
Новосибирск (383)227-86-73  
Омск (3812)21-46-40  
Орел (4862)44-53-42  
Оренбург (3532)37-68-04  
Пенза (8412)22-31-16  
Россия (495)268-04-70

Пермь (342)205-81-47  
Ростов-на-Дону (863)308-18-15  
Рязань (4912)46-61-64  
Самара (846)206-03-16  
Санкт-Петербург (812)309-46-40  
Саратов (845)249-38-78  
Севастополь (8692)22-31-93  
Симферополь (3652)67-13-56  
Смоленск (4812)29-41-54  
Сочи (862)225-72-31  
Ставрополь (8652)20-65-13  
Казахстан (772)734-952-31

Сургут (3462)77-98-35  
Тверь (4822)63-31-35  
Томск (3822)98-41-53  
Тула (4872)74-02-29  
Тюмень (3452)66-21-18  
Ульяновск (8422)24-23-59  
Уфа (347)229-48-12  
Хабаровск (4212)92-98-04  
Челябинск (351)202-03-61  
Череповец (8202)49-02-64  
Ярославль (4852)69-52-93

<https://leitz.nt-rt.ru/> || [lzt@nt-rt.ru](mailto:lzt@nt-rt.ru)